

Barcombe Playground Redevelopment

The space we have currently



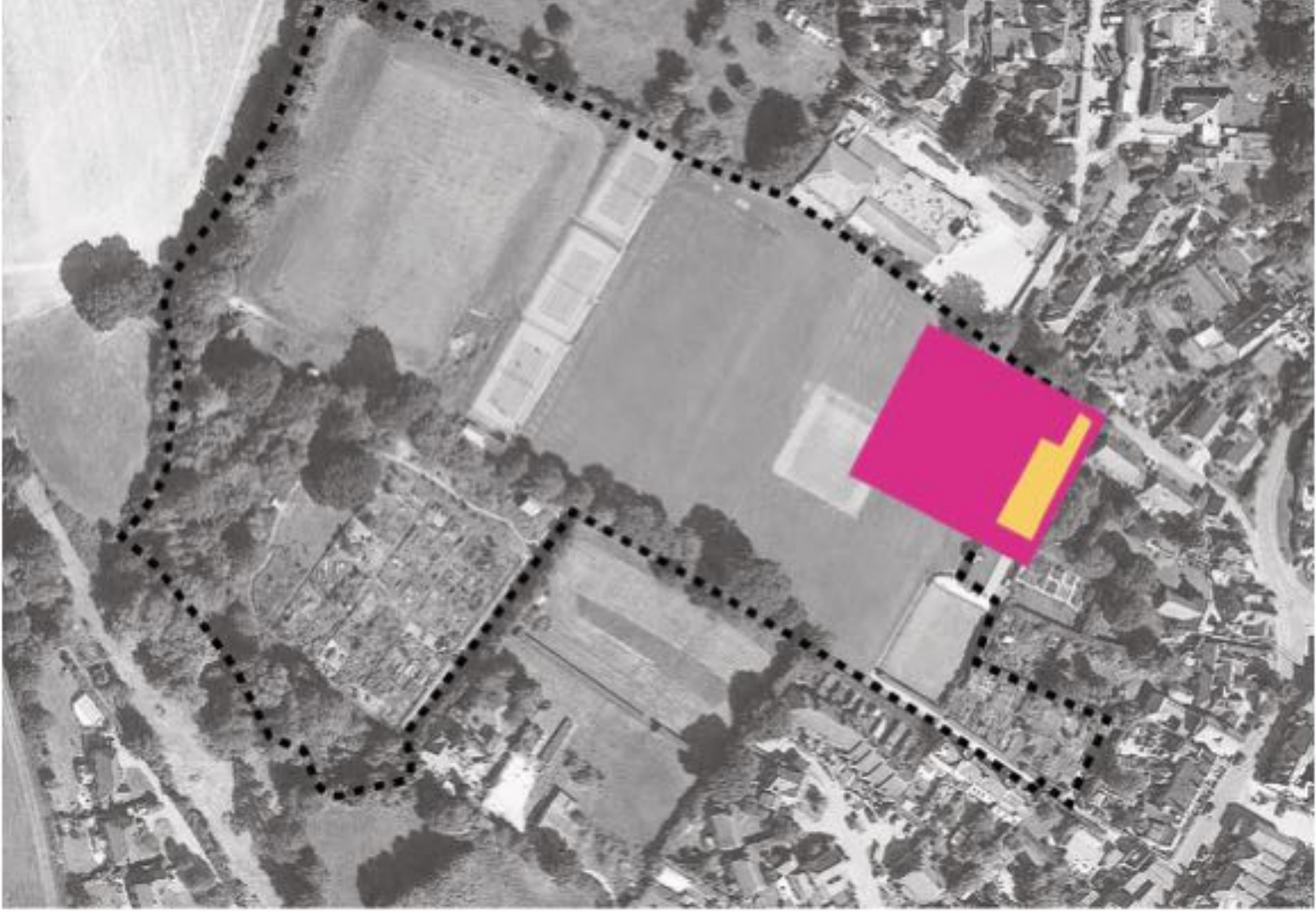
What is required

Lewes District Council recommendations for equipped play space

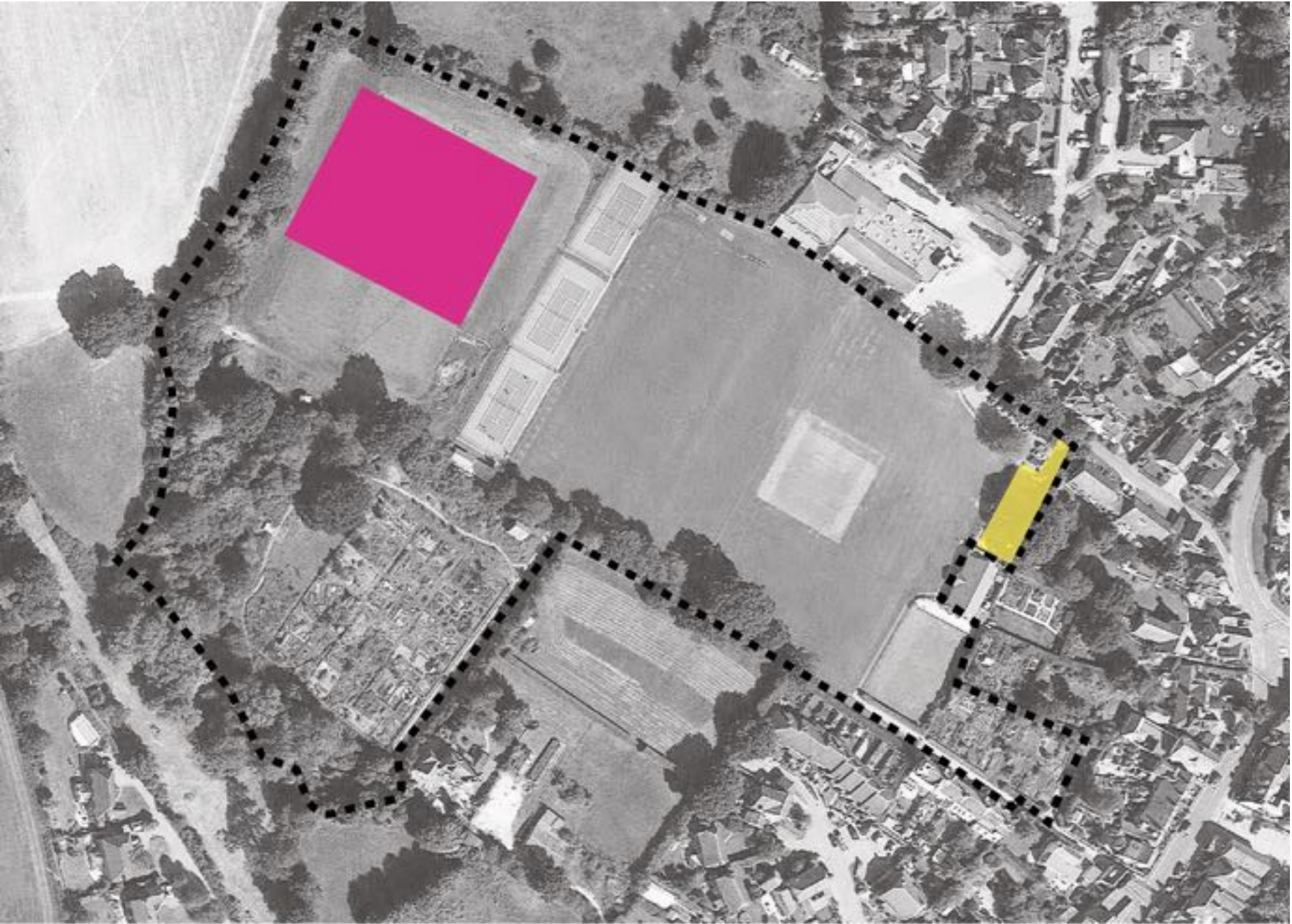
Existing equipped children's play space	Required provision	Shortfall	Projected shortfall in 2030
400 sq m (4,305 sq ft)	3800 sq m (40,903 sq ft)	- 3200 sq m (- 34,444 sq ft)	- 3500 sq m (- 37,674 sq ft)

[Reference: Fields in Trust benchmark]

What would this look like?



0 50 100 200m



0 50 100 200m

Our neighbours

Barcombe	Cooksbridge	Plumpton	Glynde
Population 1,473 0.27 sq m/ person	Population 632 1.45 sq m/ person	Population 1,644 0.71 sq m/ person	Population 249 6.78 sq m/ person



Existing
Barcombe
Playground

440 m²



Cooksbridge
Playground

920 m²



Plumpton
Playground

1165 m²



Glynde
Playground

1690 m²



Our vision:

1. Built to fit the specific needs of the village



2. Provides a sense of freedom for children within a safe environment



3. Encourages challenging physical activity and creative play



4. Uses locally sourced, sustainable materials



5. Harnesses the particular strengths of the community to forge a sense of pride and ownership



6. Reflects local character and enhances the natural beauty of the setting



7. Appeals to children of all ages and abilities



8. Accessible and welcoming for all members of the community



9. Would become a valued meeting place and a focal point for the village



10. Can adapt and evolve through flexible design features



The **final plan** will be informed by a detailed consultation with the community and could include:

- multi-use permanent structures
- moveable parts
- smooth pathways for scooting/skating and wheelchairs
- shaded areas
- seating for resting and picnicking



Why it is important to get it right

- Future proof
- Part of a wider play-strategy
- Support the sustainability of the village and ensure crucial services are retained
 - encourage young families to stay and attract new families in
 - users will contribute to the sustainability of the school, the pub and the shops
- Strategic long-term impact for the village

A New Playground for Barcombe

The Barcombe Parish Council have, for some time now, had an ambition of creating a new children's playground for the village. It's long been recognised that the current playground has reached the end of its life – although still well loved, the equipment is getting too old. The ambition for some time has been to move the playground to a new home that allows for more space. There have been a few obstacles in our way, over what has been a long journey to get us to this point. We were hoping that we would have been able to move the playground to a new location adjacent to the current recreation ground but this has not come to fruition. We were waiting for this to be made available to the Parish Council but it has now become apparent that this is not an option we can consider at this time.

We have decided that we really need a new playground as soon as possible and have gone back to considering the options we have currently available to us. We can keep the playground where it is and spend money to improve the equipment, however this space is far smaller than our recommended space for a village of our size. The other option is to move the playground to the field behind the tennis court. The Parish Council already owns this field and it offers a lot of space for a playground. However, the location is further away from the road and is out of site from the recreation ground which may make it less desirable for some. Both options will come at a considerable cost and it is planned that the Parish Council will raise money for a good proportion of the work through grant applications and local fundraising activities.

You may remember that a few years ago we sent out another questionnaire to ask what you would like from a new playground. We still have these results and will use them for our next stage and intend to come back to you again to ask about the specific requirements for the playground when we are further on in the project.

The Parish Council's Playground Working Group have narrowed down our options for a new playground and would like to put this to you to let us know what you think we should do. We would like to hear from everyone, whether you use the playground currently or not. We would like to create a playground that is accessible to as many people in the community as possible, any age or ability.

There are two options that we now have for a new playground:

- 1 Create a new playground in its current location.
- 2 Create a new playground in the field below the tennis courts.

Both options have their pros and cons. This is why we would like to know what you think.

Option 1: Keep playground where it is

Pros

- This is the cheaper option.
- It will be relatively quick to create a new playground on this site.
- The location is already established and is convenient for before and after the school day.

Cons

- The space is too small to provide an adequate playground for the number of children in the village - there is not enough space to install equipment for all age groups who would like to use the playground.
- Health and safety guidelines for playgrounds now require more space between pieces of equipment than are currently provided, therefore we would not be able to install new equipment like-for-like.

Option 2: Move to the lower field beyond the tennis courts

Pros

- There is a lot of space allowing for great opportunities to create a playground for all abilities and ages.
- We would have enough space for a children's playground as well as for other activities e.g. football, picnic area with formal planting or an adult gym perhaps? We could design a space for all of the community including those who don't have young children.
- The new playground could be created while the old one is still being used.

Cons

- This is the more expensive option and implementation will take longer. There would need to be a lot of groundwork before a playground can be installed.
- To make this accessible to those in wheelchairs and pushchairs we would have to create a new path down to the site.
- It is not close to the road, car park or toilets and is out of sight of the recreation ground.
- A planning application would need to be submitted to Lewes District Council for change of use to an equipped playground from a playing field. The pre-planning application has already been viewed favourably by them.
- There is a possibility that some of the grant gained to level the field will need to be paid back – this needs further clarification.

Please let us know what you think by completing our online survey. Go to the Parish Council's website: www.barcombepc.net, and find the link from the homepage. There's only a couple of questions so it won't take you very long. In addition, you'll be able to see more background information on the playground project to date. The Parish Council will then use the findings from the survey to help them to decide on the next steps for the project.

If you would rather, you can complete the following survey on paper and hand this into the village shop and we will collect from there. However, it would be better for us when we are reviewing your feedback if you could complete the online survey please.

If you would like more information about the Playground Working Group's plans for a new playground or help with completing the survey, please contact the Parish Clerk on 01825 766356; email barcombe.pc@homecall.co.uk or go to the Working Group's Facebook page: <https://www.facebook.com/barcombepcplayground/>

Go to the Parish Council's website: www.barcombepc.net to complete our survey