

# Wildlife of Barcombe Parish - Moths

Some personal observations

Clive & Janet Dickson

with some additional material by Simon Linington<sup>1</sup> and Janet Chubb

<sup>1</sup>[barcombewildlife@gmail.com](mailto:barcombewildlife@gmail.com)

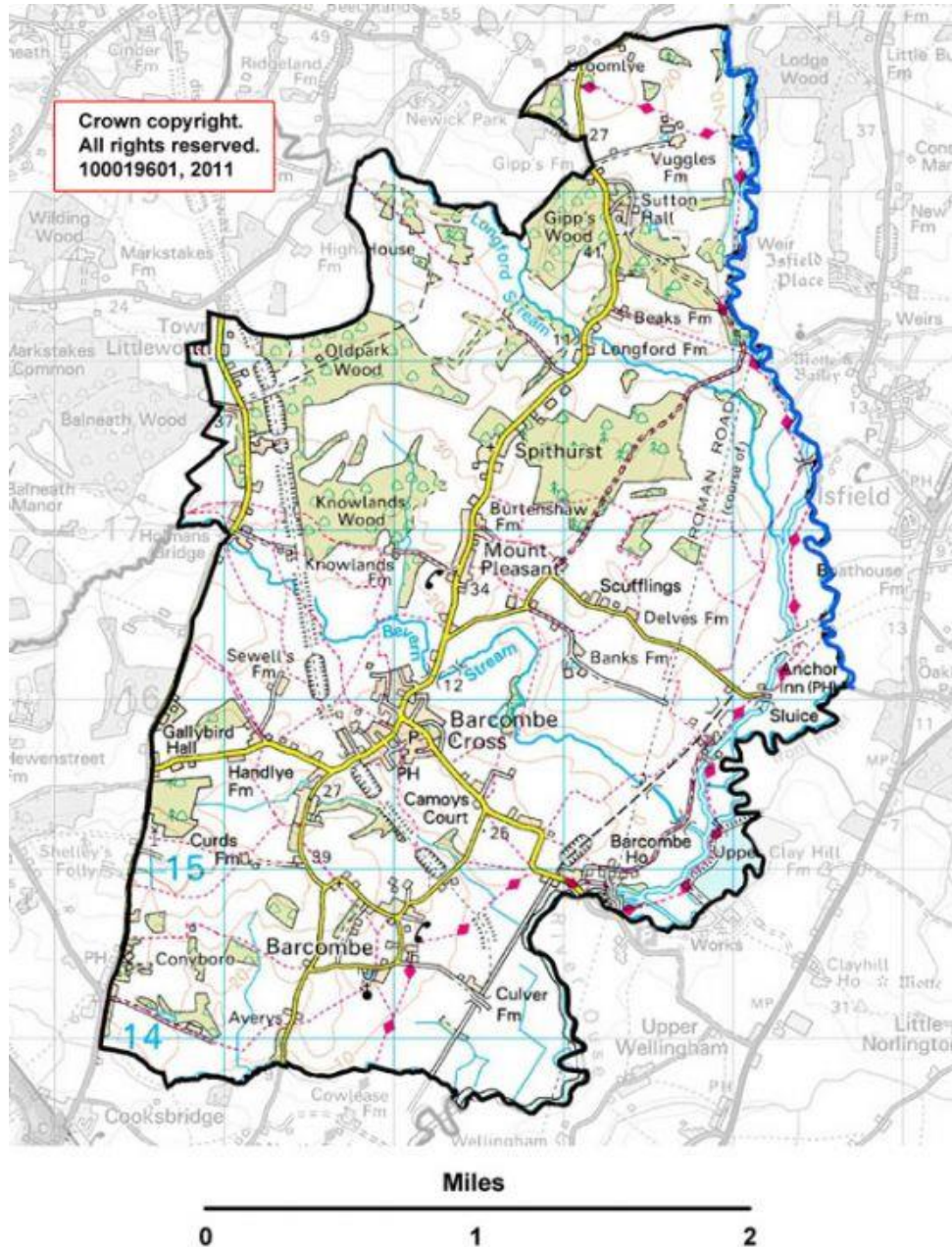
July 2019



## Introduction

Over 2,500 species of moth have been recorded in the British Isles (see <https://ukmoths.org.uk/>). The species seen in Sussex are listed at <https://www.sussexmothgroup.org.uk/>. Not that far from the coast and in one of the warmest parts of the British Isles, Barcombe Parish (see map below) is well positioned for moth trapping and seeing daytime-flying species.

**Map of Barcombe Parish** (ref. Barcombe Parish Council website)



## Observations

The observations in **Table 1** relate to the overnight trapping of 233 species of moths in Church Road, Barcombe using a mercury-vapour lamp during April to December 2007. The records are accompanied by photographs of selected species taken prior to their release (all CD & JD).

Within Table 1, 'Season' applies to moths seen in Barcombe and is only a rough guide, especially where low numbers were seen. Under 'Prevalence', *Rare* = only seen once during year of April to December 2007, *Uncommon* = seen 2-4 times, *Common* = seen 5-19 times and *V Common* = seen more than 20 times.

**Table 2** shows 148 species that are additional to those in Table 1 which are to be found in the database of the Sussex Biodiversity Records Centre (SxBRC). These records have been submitted by various observers and the date of the last report is shown.

**Table 3** contains a further four records not contained within the previous two tables.

The total number of species recorded in Barcombe Parish is consequently 385.

**Table 4** contains a list of moths found following overnight moth trapping by Janet Chubb (JC) and others at Spithurst Churchyard on 21 and 23 July 2019 that gives a flavour of moths that might be encountered in the parish during high summer. Doubtless, further trapping in the parish might make exciting finds.

The miscellaneous photos at the end of this document were taken by CD, SL and JC as credited.

**Table 1. Moths trapped overnight in Church Road, Barcombe during April – December 2007 (selected species with photo are indicated)**

Code	Taxon	Vernacular	Totals	Photo	Season	Prevalence
14	<i>Hepialus humuli humuli</i>	Ghost Moth	1	Y	July	Rare
17	<i>Korscheltellus lupulina</i>	Common Swift	8		May-June	Common
161	<i>Zeuzera pyrina</i>	Leopard Moth	1		July	Rare
658	<i>Carcina quercana</i>		2		July	Unusual
844	<i>Syncopacma larseniella</i>		1		June	Rare
873	<i>Blastobasis adustella</i>		1		July	Rare
921	<i>Phtheochroa inopiana</i>		1		May	Rare
977	<i>Archips podana</i>	Large Fruit-tree Tortrix	8		June-July	Common
979	<i>Archips crataegana</i>		1		June	Rare
998	<i>Epiphyas postvittana</i>	Light Brown Apple Moth	4		July	Common
1024	<i>Cnephasia incertana</i> agg.	Light Grey Tortrix agg.	1		July	Rare
1033	<i>Tortrix viridana</i>	Green Oak Tortrix	4		June	Common
1048	<i>Acleris variegana</i>	Garden Rose Tortrix	5		Apr-Aug	Common
1082	<i>Hedya pruniana</i>	Plum Tortrix	1		May	Rare
1092	<i>Apotomis turbidana</i>		1		June	Rare
1094	<i>Apotomis capreana</i>		1		June	Rare
1108	<i>Lobesia abscisana</i>		12		May-Aug	Common
1174	<i>Notocelia cynosbatella</i>	Yellow-faced Bell	3		May-June	Unusual
1201	<i>Eucosma cana</i>		1		July	Rare
1259	<i>Cydia fagiglandana</i>		2		July	Unusual
1260	<i>Cydia splendana</i>		5		July-Aug	Common

Code	Taxon	Vernacular	Totals	Photo	Season	Prevalence
1293	<i>Chrysoteuchia culmella</i>	Garden Grass-veneer	35		May-Aug	Common
1294	<i>Crambus pascuella</i>		2		July	Unusual
1301	<i>Crambus lathoniellus</i>		2		June	Unusual
1302	<i>Crambus perlella</i>		14		July-Aug	Common
1303	<i>Agriphila selasella</i>		1		Aug	Rare
1305	<i>Agriphila tristella</i>		1		Aug	Rare
1313	<i>Catoptria pinella</i>		2		July	Unusual
1316	<i>Catoptria falsella</i>		1		Aug	Rare
1334	<i>Scoparia ambigualis</i>		3		July	Unusual
1344	<i>Eudonia mercurella</i>		1		July	Rare
1345	<i>Elophila nymphaeata</i>	Brown China-mark	1		July	Rare
1358	<i>Evergestis pallidata</i>		2		July	Unusual
1370	<i>Sitochroa palealis</i>		1		July	Rare
1375	<i>Ostrinia nubilalis</i>	European Corn Borer	12		June-Aug	Common
1376	<i>Eurrhyncha hortulata</i>	Small Magpie	8	Y	June-July	Common
1389	<i>Udea fulvalis</i>		6		July-Aug	Common
1390	<i>Udea prunalis</i>		3		July	Unusual
1392	<i>Udea olivalis</i>		3		June	Unusual
1394	<i>Udea alpinalis</i>		3		July	Unusual
1395	<i>Udea ferrugalis</i>	Rusty-dot Pearl	2		June-Aug	Unusual
1398	<i>Nomophila noctuella</i>	Rush Veneer	1		July	Rare
1405	<i>Pleuroptya ruralis</i>	Mother of Pearl	10		July-Aug	Common
1413	<i>Hypsopygia costalis</i>	Gold Triangle	1		July	Rare
1415	<i>Orthopygia glaucinalis</i>		2		July	Unusual
1424	<i>Endotricha flammealis</i>		19		July-Aug	Common

Code	Taxon	Vernacular	Totals	Photo	Season	Prevalence
1428	<i>Aphomia sociella</i>	Bee Moth	1		May	Rare
1439	<i>Trachycera advenella</i>		2		July-Aug	Unusual
1445	<i>Pempelia formosa</i>		1		July	Rare
1458	<i>Myelois circumvoluta</i>	Thistle Ermine	1		June	Rare
1524	<i>Emmelina monodactyla</i>		1		July	Rare
1631	<i>Poecilocampa populi</i>	December Moth	1	Y	Dec	Rare
1637	<i>Lasiocampa quercus</i>	Oak Eggar	2		July	Unusual
1640	<i>Euthrix potatoria</i>	Drinker	3	Y	July	Unusual
1646	<i>Watsonalla binaria</i>	Oak Hook-tip	6		May & Aug	Common
1651	<i>Cilix glaucata</i>	Chinese Character	1		July	Rare
1652	<i>Thyatira batis</i>	Peach Blossom	2	Y	Aug	Unusual
1653	<i>Habrosyne pyritoides</i>	Buff Arches	2	Y	July-Aug	Unusual
1654	<i>Tethea ocularis</i>	Figure of Eighty	4		May-June	Unusual
1658	<i>Cymatophorima diluta</i>	Oak Lutestring	1		Sept	Rare
1663	<i>Alsophila aescularia</i>	March Moth	1		Apr	Rare
1666	<i>Geometra papilionaria</i>	Large Emerald	1	Y	July	Rare
1667	<i>Comibaena bajularia</i>	Blotched Emerald	7	Y	June	Common
1669	<i>Hemithea aestivaria</i>	Common Emerald	1		June	Rare
1673	<i>Hemistola chrysoprasaria</i>	Small Emerald	1		Aug	Rare
1680	<i>Cyclophora punctaria</i>	Maiden's Blush	5	Y	Apr-June	Common
1682	<i>Timandra comae</i>	Blood-vein	4	Y	June-Aug	Unusual
1705	<i>Idaea fuscovenosa</i>	Dwarf Cream Wave	4		July	Unusual
1713	<i>Idaea aversata</i>	Riband Wave	26		July-Sept	V Common
1715	<i>Idaea straminata</i>	Plain Wave	1		Aug	Rare
1724	<i>Xanthorhoe spadicearia</i>	Red Twin-spot Carpet	2		Apr & July	Unusual

Code	Taxon	Vernacular	Totals	Photo	Season	Prevalence
1727	<i>Xanthorhoe montanata</i>	Silver-ground Carpet	1		May	Rare
1738	<i>Epirrhoe alternate</i>	Common Carpet	1	Y	July	Rare
1758	<i>Eulithis pyraliata</i>	Barred Straw	1		July	Rare
1760	<i>Chloroclysta siterata</i>	Red-green Carpet	2		Oct-Nov	Unusual
1764	<i>Chloroclysta truncate</i>	Common Marbled Carpet	3		Sept-Oct	Unusual
1765	<i>Cidaria fulvata</i>	Barred Yellow	3	Y	June-July	Unusual
1769	<i>Thera britannica</i>	Spruce Carpet	2		Nov	Unusual
1773	<i>Electrophaes corylata</i>	Broken-barred Carpet	1		June	Rare
1794	<i>Euphyia unangulata</i>	Sharp-angled Carpet	1		June	Rare
1795	<i>Epirrita dilutata</i> agg.	November Moth agg.	5		Nov	Common
1802	<i>Perizoma affinitata</i>	Rivulet	2		June-July	Unusual
1825	<i>Eupithecia centaureata</i>	Lime-speck Pug	2		May-Aug	Unusual
1827	<i>Eupithecia intricate</i>	Freyer's Pug	1		May	Rare
1834	<i>Eupithecia vulgate</i>	Common Pug	1		May	Rare
1852	<i>Eupithecia abbreviate</i>	Brindled Pug	3		Apr	Unusual
1857	<i>Eupithecia tantillaria</i>	Dwarf Pug	1		June	Rare
1860	<i>Pasiphila rectangulata</i>	Green Pug	7		June-July	Rare
1884	<i>Abraxas grossulariata</i>	Magpie Moth	1		Aug	Rare
1887	<i>Lomaspilis marginata</i>	Clouded Border	7	Y	June-Aug	Common
1889	<i>Macaria notate</i>	Peacock Moth	1	Y	July	Rare
1890	<i>Macaria alternate</i>	Sharp-angled Peacock	1		Aug	Rare
1904	<i>Plagodis dolabraria</i>	Scorched Wing	23	Y	May-June	V Common
1906	<i>Opisthograptis luteolata</i>	Brimstone Moth	85		Apr-Sept	V Common
1912	<i>Ennomos quercinaria</i>	August Thorn	2		Aug	Unusual
1913	<i>Ennomos alniaria</i>	Canary-shouldered Thorn	2	Y	Aug-Sept	Unusual

Code	Taxon	Vernacular	Totals	Photo	Season	Prevalence
1914	<i>Ennomos fuscantaria</i>	Dusky Thorn	10	Y	Aug-Sept	Common
1917	<i>Selenia dentaria</i>	Early Thorn	2	Y	July	Unusual
1921	<i>Crocallis elinguaris</i>	Scalloped Oak	11	Y	June-Aug	Common
1923	<i>Colotois pennaria</i>	Feathered Thorn	6		Nov	Common
1927	<i>Lycia hirtaria</i>	Brindled Beauty	3		Apr	Unusual
1931	<i>Biston betularia</i>	Peppered Moth	12	Y	June-July	Common
1935	<i>Erannis defoliaria</i>	Mottled Umber	5		Nov-Dec	Common
1936	<i>Menophra abruptaria</i>	Waved Umber	1		May	Rare
1937	<i>Peribatodes rhomboidaria</i>	Willow Beauty	19	Y	May-Aug	Common
1941	<i>Alcis repandata</i>	Mottled Beauty	4		June	Unusual
1955	<i>Cabera pusaria</i>	Common White Wave	1		July	Rare
1956	<i>Cabera exanthemata</i>	Common Wave	2		June	Unusual
1958	<i>Lomographa temerata</i>	Clouded Silver	5		June-July	Common
1961	<i>Campaea margaritata</i>	Light Emerald	10		May-Sept	Common
1972	<i>Agrius convolvuli</i>	Convolvulus Hawk-moth	1	Y	Sept	Rare
1976	<i>Sphinx ligustri</i>	Privet Hawk-moth	4	Y	June-July	Common
1978	<i>Hyloicus pinastri</i>	Pine Hawk-moth	2		July	Unusual
1979	<i>Mimas tiliae</i>	Lime Hawk-moth	3	Y	May-June	Unusual
1980	<i>Smerinthus ocellata</i>	Eyed Hawk-moth	4	Y	June-July	Common
1981	<i>Laothoe populi</i>	Poplar Hawk-moth	20	Y	May-Aug	V Common
1991	<i>Deilephila elpenor</i>	Elephant Hawk-moth	13	Y	May-July	Common
1992	<i>Deilephila porcellus</i>	Small Elephant Hawk-moth	2		July	Unusual
1994	<i>Phalera bucephala</i>	Buff-tip	22		Apr-July	V Common
1999	<i>Stauropus fagi</i>	Lobster Moth	3	Y	May-June	Unusual
2000	<i>Notodonta dromedarius</i>	Iron Prominent	1	Y	May	Rare



Code	Taxon	Vernacular	Totals	Photo	Season	Prevalence
2003	<i>Notodonta ziczac</i>	Pebble Prominent	9		Apr-Aug	Common
2005	<i>Peridea anceps</i>	Great Prominent	3	Y	Apr-May	Unusual
2006	<i>Pheosia gnoma</i>	Lesser Swallow Prominent	1	Y	Apr	Rare
2007	<i>Pheosia tremula</i>	Swallow Prominent	1		Apr	Rare
2008	<i>Ptilodon capucina</i>	Coxcomb Prominent	6	Y	May & July/Aug	Common
2011	<i>Pterostoma palpina</i>	Pale Prominent	9		May & July/Aug	Common
2015	<i>Drymonia ruficornis</i>	Lunar Marbled Brown	6	Y	Apr-May	Common
2026	<i>Orgyia antiqua</i>	Vapourer	1		June	Rare
2028	<i>Calliteara pudibunda</i>	Pale Tussock	19	Y	Apr-June	Common
2029	<i>Euproctis chrysorrhoea</i>	Brown-tail	2		June-Aug	Unusual
2030	<i>Euproctis similis</i>	Yellow-tail	24		June-Aug	V Common
2033	<i>Lymantria monacha</i>	Black Arches	6	Y	July-Aug	Common
2037	<i>Miltochrista miniata</i>	Rosy Footman	40	Y	July-Aug	V Common
2040	<i>Cybosia mesomella</i>	Four-dotted Footman	1		June	Rare
2043	<i>Eilema sororcula</i>	Orange Footman	3		May	Unusual
2044	<i>Eilema griseola</i>	Dingy Footman	29		July-Aug	V Common
2047	<i>Eilema complana</i>	Scarce Footman	7		July	Common
2050	<i>Eilema lurideola</i>	Common Footman	42		July-Aug	V Common
2051	<i>Lithosia quadra</i>	Four-spotted Footman	1		July	Rare
2060	<i>Spilosoma lubricipeda</i>	White Ermine	19		May-June	Common
2061	<i>Spilosoma luteum</i>	Buff Ermine	36	Y	June-Aug	V Common
2063	<i>Diaphora mendica</i>	Muslin Moth	5		Apr-May	Common
2064	<i>Phragmatobia fuliginosa</i>	Ruby Tiger	4		July-Aug	Unusual
2069	<i>Tyria jacobaeae</i>	Cinnabar	12		May-June	Common
2078	<i>Nola confusalis</i>	Least Black Arches	1		May	Rare

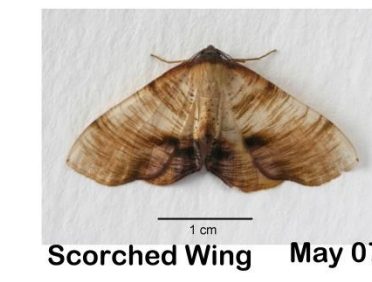
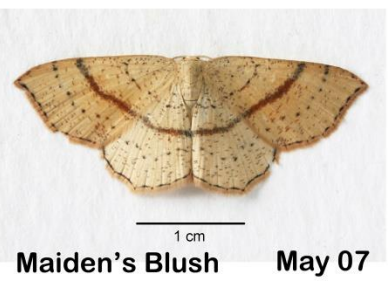
Code	Taxon	Vernacular	Totals	Photo	Season	Prevalence
2087	<i>Agrotis segetum</i>	Turnip Moth	1		Apr	Rare
2089	<i>Agrotis exclamationis</i>	Heart and Dart	114		May-July	V Common
2092	<i>Agrotis puta</i>	Shuttle-shaped Dart	7		Apr-May & Aug	Common
2098	<i>Axylia putris</i>	Flame	4		May-June	Unusual
2102	<i>Ochropleura plecta</i>	Flame Shoulder	71		Apr-Aug	V Common
2107	<i>Noctua pronuba</i>	Large Yellow Underwing	218		May-Oct	V Common
2109	<i>Noctua comes</i>	Lesser Yellow Underwing	5		June-Aug	Common
2111	<i>Noctua janthe</i>	Lesser Broad-bordered Yellow	12		July-Aug	Common
2112	<i>Noctua interjecta caliginosa</i>	Least Yellow Underwing	1		Aug	Rare
2120	<i>Diarsia mendica</i>	Ingrailed Clay	11	Y	May-June	Common
2123	<i>Diarsia rubi</i>	Small Square-spot	12		June &	Common
2126	<i>Xestia c-nigrum</i>	Setaceous Hebrew Character	86		May-Sept	V Common
2128	<i>Xestia triangulum</i>	Double Square-spot	2		July	Unusual
2133	<i>Xestia sexstrigata</i>	Six-striped Rustic	1		Aug	Rare
2134	<i>Xestia xanthographa</i>	Square-spot Rustic	19		July-Sept	Common
2145	<i>Discestra trifolii</i>	Nutmeg	2		July-Aug	Unusual
2147	<i>Hada nana</i>	Shears	8		May-June	Common
2155	<i>Melanchra persicariae</i>	Dot Moth	1		June	Rare
2157	<i>Lacanobia w-latinum</i>	Light Brocade	1		Apr	Rare
2160	<i>Lacanobia oleracea</i>	Bright-line Brown-eye	6		May-July	Common
2182	<i>Orthosia cruda</i>	Small Quaker	34		Apr	V Common
2186	<i>Orthosia gracilis</i>	Powdered Quaker	2		Apr	Unusual
2187	<i>Orthosia cerasi</i>	Common Quaker	20		Apr	V Common
2188	<i>Orthosia incerta</i>	Clouded Drab	9		Apr	Common
2189	<i>Orthosia munda</i>	Twin-spotted Quaker	1		Apr	Rare

Code	Taxon	Vernacular	Totals	Photo	Season	Prevalence
2190	<i>Orthosia gothica</i>	Hebrew Character	27		Apr-May	V Common
2194	<i>Mythimna albipuncta</i>	White-point	14		May-Sept	Common
2195	<i>Mythimna vitelline</i>	Delicate	21		June-Nov	V Common
2199	<i>Mythimna pallens</i>	Common Wainscot	130		May-Sept	V Common
2202	<i>Mythimna l-album</i>	L-album Wainscot	1		Sept	Rare
2205	<i>Mythimna comma</i>	Shoulder-striped Wainscot	5		May-June	Common
2227	<i>Brachionycha sphinx</i>	Sprawler	3		Nov	Unusual
2232	<i>Aporophyla nigra</i>	Black Rustic	1		Oct	Rare
2236	<i>Lithophane hepatica</i>	Pale Pinion	2		Apr-June	Unusual
2237	<i>Lithophane ornitopus</i>	Grey Shoulder-knot	1		Apr	Rare
2240	<i>Lithophane leautieri</i>	Blair's Shoulder-knot	4		Oct-Nov	Unusual
2243	<i>Xylocampa areola</i>	Early Grey	6		Apr-May	Common
2245	<i>Allophyes oxyacanthae</i>	Green-brindled Crescent	3		Nov	Unusual
2247	<i>Dichonia aprilina</i>	Merveille du Jour	2	Y	Nov	Unusual
2248	<i>Dryobotodes eremita</i>	Brindled Green	8		Sept-Nov	Common
2256	<i>Eupsilia transversa</i>	Satellite	2		Apr & Nov	Unusual
2262	<i>Agrochola circellaris</i>	Brick	2		Nov	Unusual
2263	<i>Agrochola lota</i>	Red-line Quaker	2		Oct-Nov	Unusual
2264	<i>Agrochola macilenta</i>	Yellow-line Quaker	4		Nov	Unusual
2267	<i>Agrochola lychnidis</i>	Beaded Chestnut	3		Oct-Nov	Unusual
2269	<i>Atethmia centrargo</i>	Centre-barred Sallow	3		Sept	Unusual
2270	<i>Omphaloscelis lunosa</i>	Lunar Underwing	37		Sept-Oct	V Common
2271	<i>Xanthia citrargo</i>	Orange Sallow	1		Sept	Rare
2272	<i>Xanthia aurago</i>	Barred Sallow	7		Sept-Nov	Common
2274	<i>Xanthia icteritia</i>	Sallow	3		Sept-Oct	Unusual

Code	Taxon	Vernacular	Totals	Photo	Season	Prevalence
2278	<i>Acronicta megacephala</i>	Poplar Grey	5		May-Aug	Common
2279	<i>Acronicta aceris</i>	Sycamore	3		July-Aug	Unusual
2284	<i>Acronicta psi</i> agg.	Grey Dagger agg.	6		May-Aug	Common
2291	<i>Craniophora ligustri</i>	Coronet	4		July	Unusual
2302	<i>Rusina ferruginea</i>	Brown Rustic	1		June	Rare
2306	<i>Phlogophora meticulosa</i>	Angle Shades	22	Y	Apr-Oct	V Common
2318	<i>Cosmia trapezina</i>	Dun-bar	2		July	Unusual
2319	<i>Cosmia pyralina</i>	Lunar-spotted Pinion	2		July	Unusual
2321	<i>Apamea monoglypha</i>	Dark Arches	55		June-Aug	V Common
2322	<i>Apamea lithoxylaea</i>	Light Arches	1		July	Rare
2323	<i>Apamea sublustri</i>	Reddish Light Arches	1		July	Rare
2337	<i>Oligia strigilis</i> agg.	Marbled Minor agg.	29		May-July	V Common
2343	<i>Mesapamea secalis</i> agg.	Common Rustic / Lesser CR agg.	48/14		July-Aug	V Common
2345	<i>Photedes minima</i>	Small Dotted Buff	3		July	Unusual
2352	<i>Eremobia ochroleuca</i>	Dusky Sallow	3	Y	July	Unusual
2353	<i>Luperina testacea</i>	Flounced Rustic	2		Sept	Unusual
2361	<i>Hydraecia micacea</i>	Rosy Rustic	1		Sept	Rare
2364	<i>Gortyna flavago</i>	Frosted Orange	1		Sept	Rare
2373	<i>Archanara sparganii</i>	Webb's Wainscot	1		July	Rare
2380	<i>Charanyca trigrammica</i>	Treble Lines	66		May-June	Common
2381	<i>Hoplodrina alsines</i>	Uncertain	69		June-Aug	Common
2382	<i>Hoplodrina blanda</i>	Rustic	35		June-Aug	Common
2384	<i>Hoplodrina ambigua</i>	Vine's Rustic	27		May-Sept	Common
2387	<i>Caradrina morpheus</i>	Mottled Rustic	38		May-July	Common
2425	<i>Colocasia coryli</i>	Nut-tree Tussock	8		Apr-July	Common

<b>Code</b>	<b>Taxon</b>	<b>Vernacular</b>	<b>Totals</b>	<b>Photo</b>	<b>Season</b>	<b>Prevalence</b>
2434	<i>Diachrysia chrysitis</i>	Burnished Brass	19	Y	May-Sept	Common
2439	<i>Plusia festucae</i>	Gold Spot	7		Aug	Common
2441	<i>Autographa gamma</i>	Silver Y	8	Y	June-Aug	Common
2449	<i>Abrostola triplasia</i>	Dark Spectacle	1		June-Aug	Rare
2450	<i>Abrostola tripartite</i>	Spectacle	6	Y	May-Aug	Common
2466	<i>Lygephila pastinum</i>	Blackneck	1		July	Rare
2469	<i>Scoliopteryx libatrix</i>	Herald	2	Y	Apr	Unusual
2474	<i>Rivula sericealis</i>	Straw Dot	42		June-Sept	Common
2475	<i>Parascotia fuliginaria</i>	Waved Black	1		July	Rare
2477	<i>Hypena proboscidalis</i>	Snout	10		May-Sept	Common
2489	<i>Zanclognatha tarsipennalis</i>	Fan-foot	15		July-Aug	Common
2492	<i>Herminia grisealis</i>	Small Fan-foot	2		June	Unusual

Images of selected moths recorded in Table 1 (all photos Clive & Janet Dickson)





Canary Shouldered Thorn Sept 07



Dusky Thorn Aug. 07



Early Thorn Jul. 07



Scalloped Oak Jul. 07



Willow Beauty Jul. 07



Peppered Moth Jun. 07



Elephant Hawkmoth May 07



Lime Hawkmoths May 07



Privet Hawkmoth Jun. 06



Poplar Hawkmoth May 07



Eyed Hawkmoth Jun. 07



Convolvus Hawkmoth Sept. 07



Lobster moth Jul.07



Iron Prominent May 07



Lesser Swallow Promin. Apr. 07



Coxcomb Prominent Jul 07



Great Prominent May 07



Buff Ermine Jun.07



Ingrailed Clay May 07



Rosy Footman Jul. 07



Pale Tussock May 07



Lunar Marbled Apr. 07



Black Arches Jul. 07



Dusky Swallow Jul. 07



Merveille du Jour Nov. 07



Spectacle Jun. 07



Burnished Brass Aug. 07



Angle Shades Apr. 07



Silver Y Aug. 07



Herald Apr. 07



**Table 2. Information provided by others via the Sussex Biodiversity Records Centre (SxBRC) database on species not included in Table 1.**

<b>Scientific name</b>	<b>Common name</b>	<b>Last recorded</b>
<i>Abrostola tripartite</i>	Spectacle	2017
<i>Acasis viretata</i>	Yellow-barred Brindle	2008
<i>Acrobasis advenella</i>	Grey Knot-horn	2017
<i>Acronicta alni</i>	Alder Moth	2016
<i>Acronicta rumicis</i>	Knot Grass	2008
<i>Adela reaumurella</i>	Green Long-horn	2016
<i>Agapeta hamana</i>	Common Yellow Conch	2015
<i>Agriopis leucophaearia</i>	Spring Usher	2009
<i>Agriopis marginaria</i>	Dotted Border	2009
<i>Agriphila straminella</i>	Straw Grass-veneer	2012
<i>Agrotera nemoralis</i>	Beautiful Pearl	2016
<i>Agrotis clavis</i>	Heart & Club	2009
<i>Agrotis ipsilon</i>	Dark Sword-grass	2017
<i>Aleimma loeflingiana</i>	Yellow Oak Button	2008
<i>Amphipyra</i>	A Moth	2008
<i>Anania hortulata</i>	Small Magpie	2016
<i>Anania lancealis</i>	Long-winged Pearl	2017
<i>Anarta trifolii</i>	Nutmeg	2007
<i>Angerona prunaria</i>	Orange Moth	2016
<i>Anorthoa munda</i>	Twin-spotted Quaker	2009
<i>Anthophila fabriciana</i>	Common Nettle-tap	2012
<i>Apamea epomidion</i>	Clouded Brindle	2009
<i>Apocheima hispidaria</i>	Small Brindled Beauty	2009
<i>Archiearis parthenias</i>	Orange Underwing	2018
<i>Archips xylosteana</i>	Variiegated Golden Tortrix	2017
<i>Arctia caja</i>	Garden Tiger	2008
<i>Asteroscopus sphinx</i>	Sprawler	2007
<i>Autographa jota</i>	Plain Golden Y	2006
<i>Autographa pulchrina</i>	Beautiful Golden Y	2017
<i>Bena bicolorana</i>	Scarce Silver-lines	2017
<i>Biston strataria</i>	Oak Beauty	2009
<i>Blastodacna hellerella</i>	Hawthorn Cosmet	2017
<i>Brachylomia viminalis</i>	Minor Shoulder-knot	2017
<i>Cameraria ohridella</i>	Horse-Chestnut Leaf-miner	2013
<i>Campaea margaritaria</i>	Light Emerald	2016
<i>Caradrina clavipalpis</i>	Pale Mottled Willow	2009
<i>Catocala nupta</i>	Red Underwing	2006
<i>Cerastis rubricosa</i>	Red Chestnut	2008
<i>Chlorissa viridata</i>	Small Grass Emerald	1919
<i>Chloroclystis v-ata</i>	V-Pug	2008
<i>Cirrhia icteritia</i>	Sallow	2007

Scientific name	Common name	Last recorded
<i>Cleorodes lichenaria</i>	Brussels Lace	2017
<i>Clostera curtula</i>	Chocolate-tip	2008
<i>Cnephasia communana</i>	May Shade	2008
<i>Coenobia rufa</i>	Small Rufous	2008
<i>Colostygia pectinataria</i>	Green Carpet	2009
<i>Conistra ligula</i>	Dark Chestnut	2008
<i>Conistra vaccinia</i>	Chestnut	2008
<i>Crambus silvella</i>	Wood Grass-veneer	2008
<i>Cucullia verbasci</i>	Mullein	2009
<i>Cyclophora annularia</i>	Mocha	2018
<i>Cyclophora linearia</i>	Clay Triple-lines	2018
<i>Cymatophorina diluta hartwegi</i>	Oak Lutestring	2007
<i>Drepana falcataria</i>	Pebble Hook-tip	2008
<i>Dysstroma citrate</i>	Dark Marbled Carpet	2006
<i>Dysstroma truncata</i>	Common Marbled Carpet	2007
<i>Earias clorana</i>	Cream-bordered Green Pea	2006
<i>Earophila badiata</i>	Shoulder Stripe	2008
<i>Ecliptopera silaceata</i>	Small Phoenix	2017
<i>Ectropis crepuscularia</i>	Engrailed	2006
<i>Eilema caniola</i>	Hoary Footman	2008
<i>Epirrhoe alternata</i>	Common Carpet	2007
<i>Eriogaster lanestris</i>	Small Eggar	2018
<i>Eugnorisma glareosa</i>	Autumnal Rustic	2006
<i>Eupithecia abbreviata</i>	Brindled Pug	2009
<i>Eupithecia exiguata</i>	Mottled Pug	2008
<i>Eupithecia intricate</i>	Freyer's Pug	2007
<i>Eupithecia pulchellata</i>	Foxglove Pug	2008
<i>Eupithecia tripunctaria</i>	White-spotted Pug	2009
<i>Eupithecia vulgate</i>	Common Pug	2008
<i>Evergestis forficalis</i>	Garden Pebble	2008
<i>Furcula bicuspis</i>	Alder Kitten	2016
<i>Gandaritis pyraliata</i>	Barred Straw	2016
<i>Gastropacha quercifolia</i>	Lappet	2017
<i>Globia sparganii</i>	Webb's Wainscot	2007
<i>Griposia aprilina</i>	Merveille du Jour	2007
<i>Gymnoscelis rufifasciata</i>	Double-striped Pug	2008
<i>Gypsonoma sociana</i>	White Cloaked Shoot	2008
<i>Hada plebeja</i>	Shears	2009
<i>Hadena perplexa</i>	Tawny Shears	2008
<i>Hedya nubiferana</i>	Marbled Orchard Tortrix	2008
<i>Helicoverpa armigera</i>	Scarce Bordered Straw or Old World Bollworm	2006
<i>Herminia tarsipennalis</i>	Fan-foot	2016
<i>Hoplodrina octogenaria</i>	Uncertain	2017

Scientific name	Common name	Last recorded
<i>Horisme vitalbata</i>	Small Waved Umber	2008
<i>Hydrelia flammeolaria</i>	Small Yellow Wave	2016
<i>Hydriomena furcata</i>	July Highflier	2017
<i>Hypomecis punctinalis</i>	Pale Oak Beauty	2008
<i>Hypomecis roboraria</i>	Great Oak Beauty	2006
<i>Hypsopygia glaucinalis</i>	Double-striped Tabby	2007
<i>Idaea subsericeata</i>	Satin Wave	2006
<i>Ipimorpha retusa</i>	Double Kidney	2008
<i>Larentia clavaria</i>	Mallow	2006
<i>Laspeyria flexula</i>	Beautiful Hook-tip	2017
<i>Leucania comma</i>	Shoulder-striped Wainscot	2016
<i>Ligdia adustata</i>	Scorched Carpet	2018
<i>Limnaecia phragmitella</i>	Bulrush Cosmet	2017
<i>Lithophane semibrunnea</i>	Tawny Pinion	2009
<i>Lithophane social</i>	Pale Pinion	2009
<i>Lycophotia porphyrea</i>	True Lover's Knot	2008
<i>Macaria alternate</i>	Sharp-angled Peacock	2008
<i>Macaria notate</i>	Peacock Moth	2007
<i>Macroglossum stellatarum</i>	Humming-bird Hawk-moth	2008
<i>Mamestra brassicae</i>	Cabbage Moth	2008
<i>Meganola strigula</i>	Small Black Arches	2016
<i>Micropterix calthella</i>	Plain Gold	2010
<i>Mythimna farrago</i>	Clay	2008
<i>Mythimna impure</i>	Smoky Wainscot	2017
<i>Mythimna vitelline</i>	Delicate	2007
<i>Nematopogon swammerdamella</i>	Large Long-horn	2009
<i>Nemophora degeerella</i>	Yellow-barred Long-horn	2016
<i>Noctua fimbriata</i>	Broad-bordered Yellow Underwing	2017
<i>Nola cucullatella</i>	Short-cloaked Moth	2008
<i>Notocelia uddmanniana</i>	Bramble Shoot Moth	2008
<i>Nyctobrya muralis</i>	Marbled Green	2006
<i>Odontopera bidentata</i>	Scalloped Hazel	2008
<i>Ourapteryx sambucaria</i>	Swallow-tailed Moth	2017
<i>Pammene aurana</i>	Orange-spot Piercer	2012
<i>Pandemis cerasana</i>	Barred Fruit-tree Tortrix	2017
<i>Panolis flammea</i>	Pine Beauty	2008
<i>Pechipogo strigilata</i>	Common Fan-foot	2016
<i>Peridroma saucia</i>	Pearly Underwing	2006
<i>Petrophora chlorosata</i>	Brown Silver-line	2018
<i>Phigalia pilosaria</i>	Pale Brindled Beauty	2009
<i>Polyploca ridens</i>	Frosted Green	2017
<i>Pseudoips prasinana britannica</i>	Green Silver-lines	2016
<i>Pterophorus pentadactyla</i>	White Plume	2017

Scientific name	Common name	Last recorded
<i>Pyrausta purpuralis</i>	Common Purple & Gold	2006
<i>Rhizedra lutosa</i>	Large Wainscot	2006
<i>Rhodometra sacraria</i>	Vestal	2006
<i>Rhodophaea formosa</i>	Beautiful Knot-horn	2007
<i>Scopula floslactata</i>	Cream Wave	2009
<i>Scopula imitaria</i>	Small Blood-vein	2008
<i>Simyra albovenosa</i>	Reed Dagger or Powdered Wainscot	2008
<i>Sphinx pinastri</i>	Pine Hawk-moth	2007
<i>Spilosoma lutea</i>	Buff Ermine	2017
<i>Subacronicta megacephala</i>	Poplar Grey	2017
<i>Tethea ocellaris</i>	Figure of Eighty	2009
<i>Tetheella fluctuosa</i>	Satin Lutestring	2016
<i>Thalpophila matura</i>	Straw Underwing	2006
<i>Thera cypressata</i>	Cypress Carpet	2006
<i>Tholera decimalis</i>	Feathered Gothic	2006
<i>Tiliacea aurago</i>	Barred Sallow	2007
<i>Tiliacea citrigo</i>	Orange Sallow	2007
<i>Tortricodes alternella</i>	Winter Shade	2009
<i>Trichiura crataegi</i>	Pale Eggar	2006
<i>Xanthorhoe fluctuata fluctuata</i>	Garden Carpet	2006
<i>Zygaena filipendulae</i>	Six-spot Burnet	2017

**Table 3. Table of additional (mainly daytime-flying) species records from Barcombe Parish**

Scientific name	Common name	Last recorded
<i>Callimorpha dominula</i>	Scarlet Tiger	2019
<i>Callistege mi</i>	Mother Shipton	2019
<i>Macroglossum stellatarum</i>	Hummingbird Hawkmoth	2006
<i>Pseudopanthera macularia</i>	Speckled Yellow	2019

**Table 4. Table of moths released from a moth trap at Spithurst Churchyard on 21 and 23 July 2019 following overnight trapping**

Scientific name	Common name	Date	Comment
<i>Amphipyra pyramidea</i> agg.	Copper Underwing agg.	21 July	1 (new for parish)
<i>Chrysoteuchia culmella</i>	Garden Grass-veneer	21 July	1
<i>Cosmia trapezina</i>	Dun-bar	21 July	Several
<i>Cydia splendana</i>	Marbled Piercer	21 July	1
<i>Eilema lurideola</i>	Common Footman	21 July	1
<i>Laothoe populi</i>	Poplar Hawk-moth	21 July	1
<i>Ligdia adustata</i>	Scorched Carpet	21 July	1
<i>Lomaspilis marginata</i>	Clouded Border	21 July	1

Scientific name	Common name	Date	Comment
<i>Lymantria monacha</i>	Black Arches	21 July	1 (male)
<i>Mesapamea secalis</i> agg.	Common Rustic agg.	21 July	Several
<i>Parascotia fuliginaria</i>	Waved Black	21 July	1 (scarce)
<i>Phalera bucephala</i>	Buff-tip	21 July	1
<i>Xestia triangulum</i>	Double Square-spot	21 July	2
<i>Apamea monoglypha</i>	Dark Arches	23 July	Present
<i>Colocasia coryli</i>	Nut-tree Tussock	23 July	Present
<i>Drepana falcataria</i>	Pebble Hook-tip	23 July	Present
<i>Euproctis similis</i>	Yellow-tail	23 July	Present
<i>Hyloicus pinastri</i>	Pine Hawk-moth	23 July	Present
<i>Laothoe populi</i>	Poplar Hawkmoth	23 July	Present
<i>Lymantria monacha</i>	Black Arches	23 July	Present
<i>Miltochrista miniata</i>	Rosy Footman	23 July	Present
<i>Noctua fimbriata</i>	Broad-bordered Yellow Underwing	23 July	Present
<i>Noctua janthe</i>	Lesser Broad-bordered Yellow Underwing	23 July	Present
<i>Noctua pronuba</i>	Large Yellow Underwing	23 July	Present
<i>Notodonta dromedarius</i>	Iron Prominent	23 July	Present
<i>Ostrinia nubilalis</i>	European Corn-borer	23 July	Present
<i>Phragmatobia fuliginosa</i>	Ruby Tiger	23 July	Present
<i>Pyrausta purpuralis</i>	Common Purple and Gold	23 July	Present
<i>Zeuzera pyrina</i>	Leopard Moth	23 July	Present

**Miscellaneous images** (not to fixed scale)



**Hummingbird Hawkmoth, Church Road,  
20 Aug 2006 (photo – CD). See table 3**



**Yellow-barred Long-horn, Old Railway  
Track NW of Barcombe Cross, 9 June  
2019 (photo – SL).**



**Scarlet Tiger, Barcombe Cross, 23 June 2019 (photo – SL). See table 3**



**Speckled Yellow, Knowlands Wood, 27 May 2019 (photo – SL). See table 3**



**Mother Shipton, Old Railway Track NW of Barcombe Cross, 27 May 2019 (photo – SL). See table 3**



**Poplar Hawk-moth, Spithurst Churchyard, 21 July 2019 (photo – SL). See table 4**



**Waved Black, Spithurst Churchyard, 21 July 2019 (photo – SL). See table 4**



**Clouded Border, Spithurst Churchyard, 21 July 2019 (photo – SL). See table 4**



**Dun-bar, Spithurst Churchyard, 21 July 2019 (photo – SL). See table 4**



**Scorched Carpet, Spithurst Churchyard, 21 July 2019 (photo – SL). See table 4**



**Double Square-spot, Spithurst Churchyard, 21 July 2019 (photo – SL). See table 4**



**Black Arches (male), Spithurst Churchyard, 21 July 2019 (photo – SL). See table 4**



**Common Rustic agg., Spithurst Churchyard, 21 July 2019 (photo – SL). See table 4**



**Copper Underwing agg., Spithurst Churchyard, 21 July 2019 (photo – SL). See table 4**



**Marbled Piercer, Spithurst Churchyard, 21 July 2019 (photo – SL). See table 4**





**Garden Grass-veneer, Spithurst Churchyard, 21 July 2019 (photo – SL). See table 4**



**Common Footman, Spithurst Churchyard, 21 July 2019 (photo – SL). See table 4**



**Buff-tip, Spithurst Churchyard, 21 July 2019 (photo – SL). See table 4**



**Broad-bordered Yellow Underwing, Spithurst Churchyard, 23 July 2019 (photo – JC). See table 4**



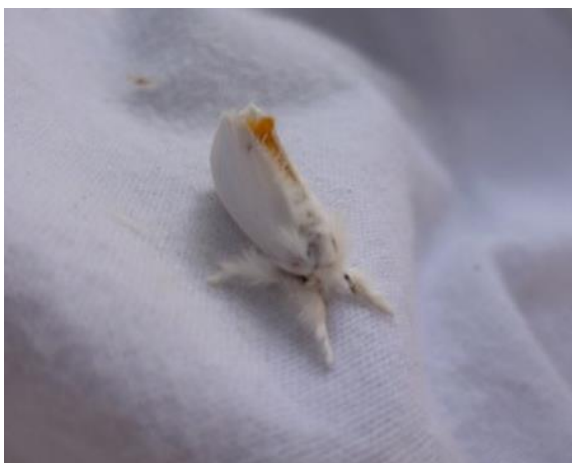
**Common Purple and Gold, Spithurst Churchyard, 23 July 2019 (photo – JC). See table 4**



**Pine Hawk-moth, Spithurst Churchyard, 23 July 2019 (photo – JC). See table 4**



**Black Arches, Spithurst Churchyard, 23 July 2019 (photo – JC). See table 4**



**Yellow-tail, Spithurst Churchyard, 23 July 2019 (photo – JC). See table 4**



**European Corn-borer, Spithurst Churchyard, 23 July 2019 (photo – JC). See table 4**



**Rosy Footman, Spithurst Churchyard, 23 July 2019 (photo – JC). See table 4**



**Leopard Moth, Spithurst Churchyard, 23 July 2019 (photo – JC). See table 4**



**Ruby Tiger, Spithurst Churchyard, 23 July 2019 (photo – JC). See table 4**



**Pebble Hook-tip, Spithurst Churchyard, 23 July 2019 (photo – JC). See table 4**



**Lesser Broad-bordered Yellow Underwing (assumes not Langmaid's), Spithurst Churchyard, 23 July 2019 (photo – JC). See table 4**



**Large Yellow Underwing, Spithurst Churchyard, 23 July 2019 (photo – JC). See table 4**



**Large Yellow Underwing, Spithurst Churchyard, 23 July 2019 (photo – JC). See table 4**



**Large Yellow Underwing (different form to previous two), Spithurst Churchyard, 23 July 2019 (photo – JC). See table 4**



**Iron Prominent, Spithurst Churchyard, 23 July 2019 (photo – JC). See table 4**



**Dark Arches, Spithurst Churchyard, 23 July 2019 (photo – JC). See table 4**



**Nut-tree Tussock, Spithurst Churchyard, 23 July 2019 (photo – JC). See table 4**



**Poplar Hawkmoth, Spithurst Churchyard, 23 July 2019 (photo – JC). See table 4**

## Acknowledgements

- Thanks to Bob Foreman of the Sussex Biodiversity Records Centre (SxBRC) for providing up-to-date information on this and other taxonomic groups.
- Thanks to those who have submitted their records to the SxBRC thereby helping us to build up a picture of this taxonomic group within the parish.
- Thanks to Janet Chubb for putting out a moth trap in Spithurst Churchyard overnight on 20/21 and 22/23 July. The moths captured are listed in Table 4 and photos shown under 'Miscellaneous Images'. Additionally, thanks to Philip Barden (of Devon) for assisting with the identification from photos of the moths captured and for comments on this document.

## References

Paul Waring & Martin Townsend (illustrated by Richard Lewington) (2013 reprint). *Field Guide to the Moths of Great Britain and Ireland*. British Wildlife Publishing.

Sussex Moth Group. Website <https://www.sussexmothgroup.org.uk/site/>

Sussex Branch of Butterfly Conservation. Website <https://www.sussex-butterflies.org.uk/>

Sussex Biodiversity Records Centre. Website <https://sxbrc.org.uk/home/>

Sussex Wildlife Trust. Website <https://sussexwildlifetrust.org.uk/>



**Oak Eggar moth (female), Barcombe, 19 August 2015** apparently taking liquids from the surface of a snail at night