

# Wildlife of Barcombe Parish - Birds

Some personal observations (21 April 1999 – 30 September 2020)

Simon Linington

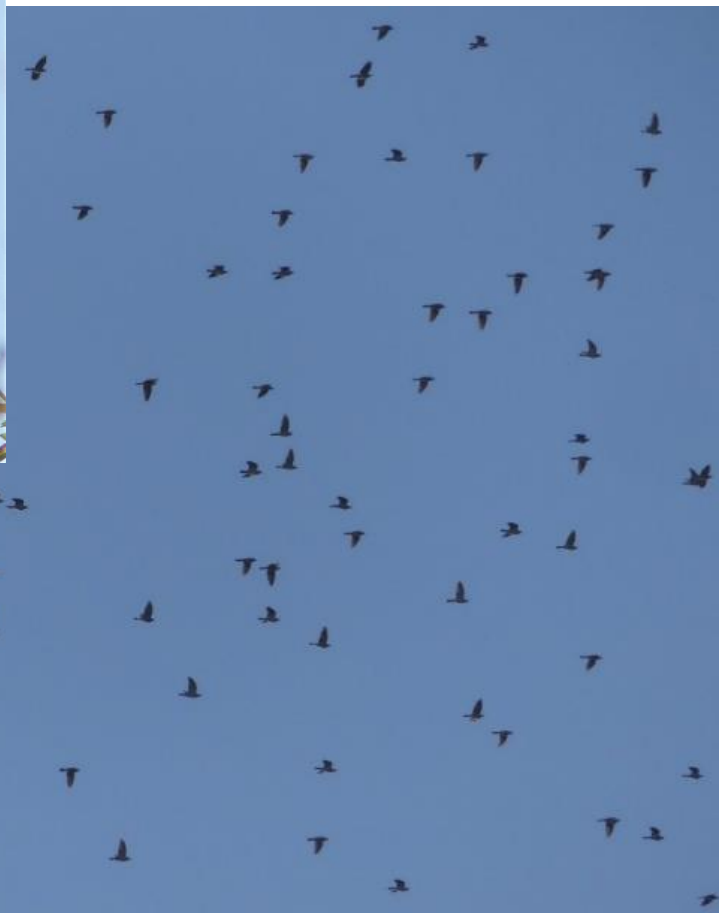
(barcombewildlife@gmail.com)



The Parish of Barcombe is fortunate in having a diversity of habitats that support resident and visiting bird species. As the map on a following page shows, the parish boundary encompasses Barcombe Reservoir which is perhaps the jewel in the crown for bird records. With the cessation of angling there in about 2007, the reservoir has **no public access** though South East Water kindly facilitate access once a month for counters as part of the national Wetland Bird Survey (WeBS). However, birds flying over the reservoir can be viewed from the footpath that runs alongside the River Ouse. There are plenty of other areas of interest in the parish most notably Knowlands Farm and Wood that is managed sympathetically for wildlife. Both of the disused railway lines (where there is public access) in the parish also are good for bird-watching. Even from my garden in Barcombe, I've recorded 106 species. Currently, the parish holds on to some farmland birds that have seriously declined elsewhere. It is also visited by a good range of passage migrants. Most migration to, from and through the area goes on unnoticed though many will note the first sounds of the Cuckoo and Chiffchaff in spring. One migrant species that holds a special affection for locals is the Nightingale (see photo below) and the parish is blessed, at least at present, in having a healthy population along the old railway track that runs north-west of the village. Perhaps some of the most spectacular events in the Barcombe year are the southerly movement in late autumn of Woodpigeons (see photo below), sometimes in their thousands, and also the evening roosting flights of hundreds of Jackdaws from early autumn through to early spring.

Table A (on a following page) comprises a summary of near-daily personal observations over the past 21 years of the birdlife of Barcombe Parish. Tables B and C add some selected information from other sources since 1966 including the Sussex Ornithological Society's database and its reports and papers. Table D contains a list of those species not seen since 1966 in the parish but that are noted in old historical records. Table E contains a list of some escaped species that have been seen. There will be many records held within the Sussex Biodiversity Records Centre plus individual observations from local people that would no doubt enhance the picture. That said, I believe the status of each species as given in Table A to be close to their current position.

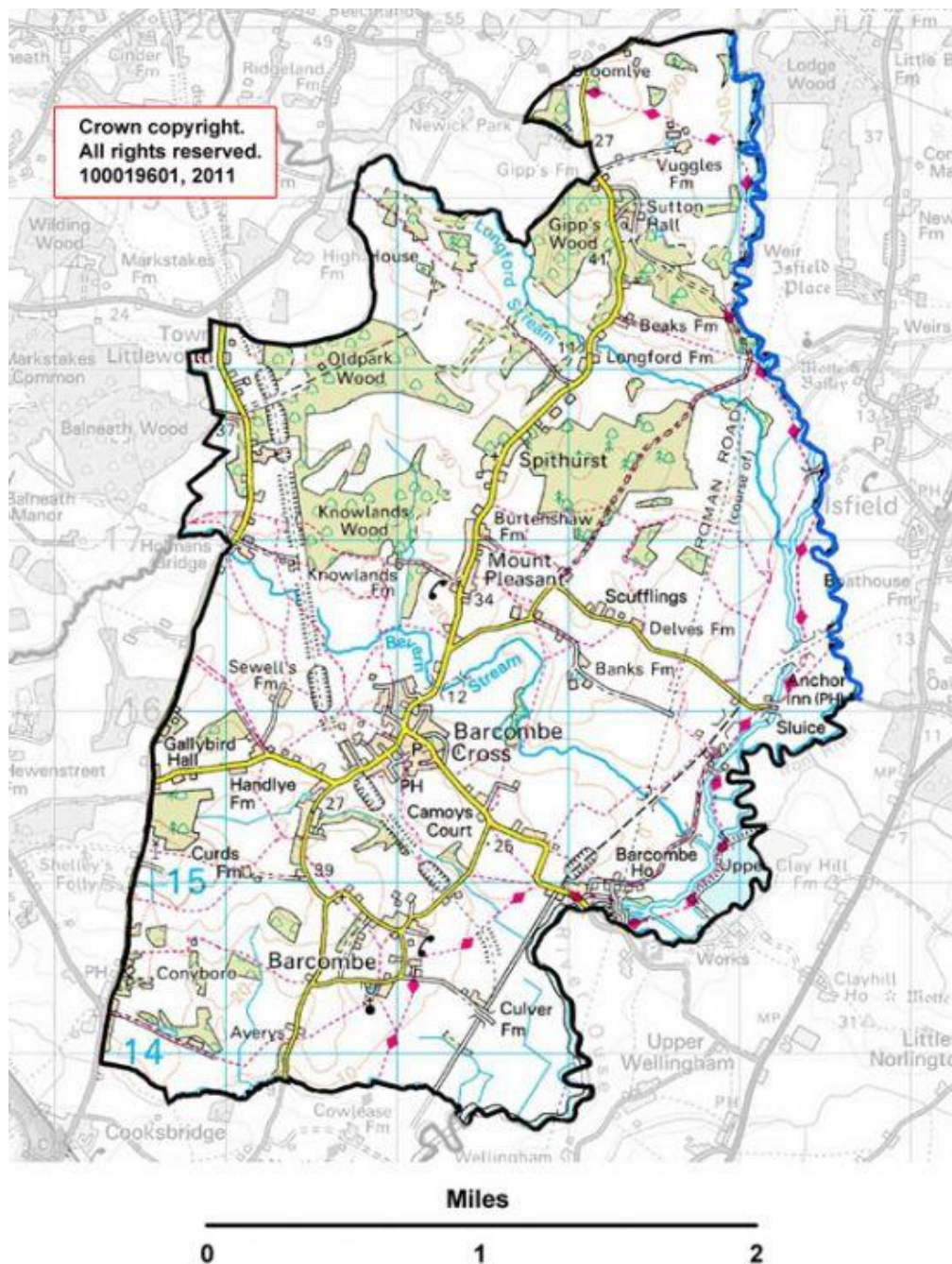
All of the images in this document were taken by me *within the parish* and during the period in question. The images are of variable quality (some are truly poor!). It is hoped to improve the standard as opportunities present themselves.



## Place names

- For simplicity, in this document both 'Barcombe' (proper) and 'Barcombe Cross' are referred to as 'Barcombe'.
- Barcombe Parish has two reservoirs – a small farm one located below the new village hall and South East Water's Barcombe Mills Reservoir. It is important to note that the latter is closed to the public. However, all references to 'Barcombe Reservoir' relate to this second facility.
- Barcombe Parish also has two disused railway tracks (though not all with public access; some stretches that are used by the public require due care). Nearly all references to the 'old railway track' relate to the 1.5 km stretch that runs from just west-north-west of the village as far as the Secret Campsite to the north-west of Knowlands Wood.
- Barcombe New Water Treatment Works (WTW) is located just west of the south-west corner of Knowlands Wood and is visible from a footpath that runs along its northern edge.

## Map of Barcombe Parish (ref. Barcombe Parish Council website)





**The old railway track north-west of Barcombe in the snow, 27 February 2018**



**Monthly Wetland Bird Survey at Barcombe Reservoir, 18 June 2018, with (l-r) David Lang, John Gowers, Clive Dickson, Patrick Austin and Robin Pepper**



**Knowlands Wood, 19 April 2019**

## **Acknowledgements**

- Thanks to fellow birders with whom I've spent many happy hours observing bird populations within the parish - in particular to David Lang, Robin Pepper, John Gowers and Clive Dickson and, also further back in time at Barcombe Reservoir, John Holt, James Grover, Peter Wilson and Bob Edgar.
- Thanks to Nick and Harriet Lear for allowing public access to Knowlands Wood and for the work they do to ensure wildlife flourishes there and on their farm. Also for their support, sharing of sightings and general enthusiasm about wildlife. Also thanks to John Hayhurst for sharing his observations from Knowlands.
- Thanks to the ecology staff from South East Water for facilitating access to Barcombe Reservoir for the monthly Wetland Bird Survey (WeBS) work that provides a continuous record of bird numbers at the reservoir since 1966. In particular, thanks go to Patrick Austin, Sam Pottier and Richard Dyer; formerly also Christina Pullan. Further back in time, thanks go to the then water bailiffs David Wickens, Tom Todd and Roger Norman.
- Thanks to the Sussex Ornithological Society Recorder, Mark Mallalieu, for providing data from the society's database, and to other observers (e.g., RDP) for posting their Barcombe sightings on the SOS website or for sending them to me directly.
- Thanks to Bob Foreman of the Sussex Biodiversity Records Centre (SxBRC) for providing information on this and other taxonomic groups.

### A. Species seen by me in Barcombe Parish between 21 April 1999 and 30 September 2020

Please note that some of the areas referred to are private with no public access e.g., Barcombe Reservoir. The comments below relate to just over two decades of sightings and are *solely my personal observations*. It is hoped to provide updates as new sightings are made.

**Status: Common** = species that are likely to be found on a half-day walk of the parish at the right season; **Scarce or local** = species seen regularly but that are never common in the parish or that only occur very locally; **Unusual** = species seen less than annually and in some cases only once – includes some species that are seen regularly elsewhere in Sussex right through to national rarities; and **Uncertain** = species where frequency is changing or is yet to be fully determined.

Evidence of breeding includes anything from birds singing for prolonged periods during the spring right through to confirmed breeding with fledged young. It can be assumed that species noted as 'resident', nest within the parish.

Species	Estimate of status	Photo	Comments
Red-throated Diver	Unusual		One in the River Ouse next to Barcombe Reservoir on 4 April 2004.
Little Grebe	Scarce or local	Y	Especially Knowlands Farm (where it has bred) and Barcombe Reservoir.
Great Crested Grebe	Scarce or local	Y	Regular at Barcombe Reservoir (maximum 33). Has bred there occasionally.
Black-necked Grebe	Unusual		Barcombe Reservoir: one in November/December 1999, one on 7 April 2004 and two in December 2011 / January 2012.
Cormorant	Common	Y	Regular at Barcombe Reservoir (maximum 135 on 21 September 2002) and often seen in small numbers flying over the parish during the winter.
Little Egret	Scarce or local	Y	Increasing. May be encountered along streams or seen flying over, usually as single birds. A flock of six was at Holmans Bridge (on the very edge of the parish) on 5 March 2007.
Grey Heron	Common	Y	Regularly seen in or over the parish, usually as single birds, occasionally visiting garden ponds and even perching on houses in Barcombe.
Mute Swan	Common	Y	Resident. Regularly breeds e.g., along the River Ouse. Occasional gatherings e.g., a flock of 27 in fields near the Anchor on 9 January 2000.
White-fronted Goose	Unusual	Y	Six sightings during autumn / winter on or around Barcombe Reservoir (maximum five).
Greylag Goose	Common	Y	Has bred e.g., pair with three young at Barcombe Reservoir on 30 May 2004. Largest count was 266 at Barcombe Reservoir on 13 September 2015.
Canada Goose	Common	Y	Resident. Breeds. Largest count was 350 at Barcombe Reservoir on 15 November 2015.
Barnacle Goose	Common	Y	A feral flock is regularly in fields at Barcombe Mills during late summer – early spring (maximum 83) and is often joined by a hybrid bird. It is uncertain where they spend the summer.

Species	Estimate of status	Photo	Comments
Brent Goose	Unusual	Y	Barcombe Reservoir – five winter records of singles. Occasionally, large flocks are seen flying south over Barcombe in autumn e.g., a flock of 100 flying south/south-west on 16 October 1999, a flock of 200 in the same direction on 15 October 2000 and a flock of 130 that flew south on 2 November 2013.
Egyptian Goose	Uncertain		This introduced species is increasing in Sussex and based on current trends could become as numerous as Greylag and Canada Geese in the next decade. The highest count was 11 at Barcombe Reservoir on 24 July 2017.
Shelduck	Unusual		Six sightings at Barcombe Reservoir (maximum six). Also seen flying over Barcombe on three occasions.
Mandarin	Uncertain	Y	This introduced species nests in trees or nest boxes and is encountered occasionally e.g., Knowlands Farm and Barcombe Reservoir. A female with two large young was at Knowlands Farm on 5 July 2020.
Wigeon	Scarce or local		Regular at Barcombe Reservoir in variable numbers during the winter (maximum 94 cf. 1970 peak noted in Table C). Also heard flying over Barcombe on 28 March 2013.
Gadwall	Scarce or local	Y	Regular at Barcombe Reservoir during the winter (maximum 74).
Teal	Scarce or local	Y	Regular at Barcombe Reservoir during the winter (maximum 277). Occasional individuals have been seen at Knowlands Farm.
Mallard	Common	Y	Regular at Barcombe Reservoir throughout the year but especially in late autumn and winter (maximum 244) and regularly seen throughout the parish, breeding in suitable habitat including gardens (see photo).
Pintail	Unusual		Barcombe Reservoir especially in winter – 11 sightings (maximum of three). Also two over Barcombe on 23 March 2001.
Garganey	Unusual		A drake at Barcombe Reservoir on 2 May 2010.
Shoveler	Scarce or local	Y	Regular at Barcombe Reservoir especially in winter but seems to be increasing (maximum 186).
Red-crested Pochard	Unusual	Y	Three drakes at Barcombe Reservoir on 18 November 2019 may possibly have been part of a small influx at the time though escapes cannot definitely be ruled out.
Pochard	Scarce or local	Y	Regular at Barcombe Reservoir especially in winter though numbers much reduced in recent years. Maximum of 121 during 1999-2007 but a maximum of only 63 since. A hybrid (x Tufted Duck) was noted in October-December 2004 and in October and November 2009.
Ring-necked Duck	Unusual		This nationally rare duck from North America was at Barcombe Reservoir in December 2000/January 2001 (up to two, a male joined by a female) and on 18 January 2003 (a female). As with any unusual wildfowl there is always a small question mark over their origin due to escapes from captive collections.
Tufted Duck	Scarce or local	Y	Regular at Barcombe Reservoir (maximum 118) and has bred there. Rarely also seen at Knowlands Farm.

Species	Estimate of status	Photo	Comments
Scaup	Unusual		Barcombe Reservoir: singles on 21 November 1999, 10 February 2002, 10 & 17 October 2004 and 9 November 2014.
Long-tailed Duck	Unusual		Barcombe Reservoir: singles of this sea-duck in: November and December 2003; November and December 2005; and April 2006.
Common Scoter	Unusual		One record of this sea-duck, a drake at Barcombe Reservoir on 17 October 2004.
Goldeneye	Unusual	Y	Occurs at Barcombe Reservoir in small numbers and mainly in winter (maximum five).
Smew	Unusual		One record, two 'redheads' at Barcombe Reservoir on 18 January 2009.
Goosander	Unusual	Y	Occurs at Barcombe Reservoir in small numbers during the winter and especially in cold weather. Seen on 22 dates (maximum of four).
Ruddy Duck	Unusual		This introduced species from North America is now nearly extinct in UK after a nationwide cull (it was considered to be a genetic threat to the closely-related and rare White-headed Ducks in Spain). Seen on 19 dates at Barcombe Reservoir (maximum of two) but none since a single on 17 October 2009.
Honey Buzzard	Unusual		Three south over Barcombe on 2 October 2000 were part of a large influx of this raptor over the UK. A number of sightings in the area during 2003 including one over Scobells Farm on 7 June. One flew over Barcombe Reservoir on 16 August 2015.
Red Kite	Scarce or local	Y	The first sighting was of one flying over Barcombe on 10 August 2001. Since then it has become much more regular and is gradually colonising Sussex following a national release scheme.
Marsh Harrier	Unusual		One over Barcombe Reservoir on 15 December 2002 and a female over Barcombe on 23 May 2003. The latter was a presumed late spring migrant.
Hen Harrier	Unusual		A smartly-plumaged male over Barcombe on 3 February 2002, a 'ringtail' (female / immature) low over Barcombe Reservoir on 19 March 2005, another over Barcombe Mills on 19 December 2010 and yet another over Barcombe on 7 January 2012.
Sparrowhawk	Scarce or local	Y	Regularly seen resident but never common. Almost certainly breeds in several places within the parish. A male killed a Collared Dove (very large item of prey) in the driveway of our Barcombe garden on 17 April 2020 (see photo).
Buzzard	Common	Y	In 1999, none were seen over Barcombe during the six months between late April and early October. In 2000, none were seen there until 5 August. Nowadays, the species is seen daily in weather conditions suitable for soaring and often in small numbers (and occasionally in double figures). A total of 14 were over Knowlands Farm on 22 March 2020. This raptor has experienced a meteoric rise in numbers both within the parish (where it breeds widely) and at county level.
Osprey	Unusual		Singles over Barcombe Reservoir on both 26 May 2007 and 7 September 2008. One flew south past Barcombe on 29 August 2009 and was a nice 'garden tick'!
Kestrel	Common	Y	A regularly-seen resident species though in small numbers. Breeds in the parish.

Species	Estimate of status	Photo	Comments
Red-footed Falcon	Unusual	Y	An adult female over fields between Barcombe Reservoir and The Anchor Inn, seen between 31 May and 4 June 2015. This national rarity was found by a visiting birdwatcher on 30 May and greatly enjoyed by others from across the county (and further afield).
Merlin	Unusual		An autumn or winter visitor seen in just six years within the parish and then usually just single day sightings of individual birds. Good views were obtained of a very smart male near The Anchor on 28 December 1999 and the most recent sighting was one over Barcombe on 21 October 2018.
Hobby	Scarce or local	Y	Seen most summers over Barcombe (though no records in 2014) and elsewhere in the parish. The frequency of sightings is dependent upon on the proximity of breeding pairs but the species has bred occasionally in the parish. The earliest annual sighting of this beautiful migrant falcon over Barcombe was on 22 April 2015; the latest was 12 October 2017. Four hawking insects just to the east of Barcombe on 29 August 2005 were thought to comprise a family party. There was an interesting sighting of an adult and a first year bird perched on the west wall of Barcombe Reservoir on 10 June 2010.
Peregrine	Scarce or local	Y	Singles are seen every few months in many years though there were no sightings in 2018 or 2019. The frequency of sightings is dependent upon the proximity of breeding pairs not far from the parish.
Red-legged Partridge	Common	Y	Seen more frequently in the parish in recent years presumably as the result of game-shooting releases.
Grey Partridge	Unusual		Three in a field next to Barcombe Reservoir on 3 August 2003 is the sole record of this increasingly rare game-bird (though see comments in Table C).
Pheasant	Common	Y	Common resident. Breeds.
Water Rail	Unusual		One beside the road near Holmans Bridge on 14 January 2009.
Moorhen	Common	Y	Widespread in suitable habitat. Usually breeds in the parish. Garden records in Barcombe e.g., 30 July 2000, 1 May 2003, 9 November 2005 and 19 July 2010.
Coot	Scarce or local	Y	Present throughout the year at Barcombe Reservoir, occasionally breeding, but with a marked winter increase (maximum 249). Occasionally elsewhere. Heard calling while flying at night over Barcombe on 21 April 2015, 11 April 2019 and 4 April 2020.
Little Ringed Plover	Unusual		Passage migrant seen at Barcombe Reservoir on one date in March, two dates in April, one date in May, one date in July (six on 18 July 2004) and one date in September. Only seen once in the past 14 years (20 April 2014).
Ringed Plover	Unusual		One at Barcombe Reservoir on 11 May 2002.
Golden Plover	Unusual		Used to be fairly regular in winter at Barcombe Reservoir (maximum 45) but none since January 2005. Occasionally seen flying over the parish e.g., 21 south near Red Bridge on 5 February 2012.



Species	Estimate of status	Photo	Comments
Lapwing	Scarce or local	Y	Regular at Barcombe Reservoir especially in winter but numbers reduced since the maximum of 1,000 on 18 December 2004. A young bird was seen on the reservoir wall on 18 June 2018 indicating breeding success. Occasionally seen displaying over fields just outside the parish e.g., near Shelley's Folly on 20 April 2004. Two in a bean field at Knowlands Farm on 28 May 2016 and three there on 2 May 2020 gave false hope of late breeding. See also comments in Table C. Small numbers seen over Barcombe most years but there were 300 seen over there on 1 January 2005.
Little Stint	Unusual		Three adults in summer plumage at Barcombe Reservoir on 11 June 2005 was an unusual record of what were presumed to be late spring migrants. They were very tame allowing approach to within five metres.
Dunlin	Unusual		This species used to be a reasonably regular species on passage and in winter at Barcombe Reservoir (maximum 27 on 16 January 2000) but none seen there since 2004. One was seen over Barcombe on 20 February 2000.
Snipe	Scarce or local	Y	Fairly irregular and in small numbers on passage or in winter at Barcombe Reservoir (maximum 22 – disturbed from fields to west by a fox on 13 March 2011) but probably quite regular in damp grassland near the River Ouse. Regular in very small numbers at Knowlands Farm and occasionally over Barcombe e.g., four flying north-west in frozen conditions on 1 January 2002.
Woodcock	Scarce or local	Y	Regular in small numbers at Knowlands Wood (e.g., four on both 30 January and 2 February 2019) and one over Barcombe at dusk on 2 November 2016.
Whimbrel	Unusual		Sightings of birds on passage: one heard over Barcombe on 3 September 2002; a flock of nine south-west over Knowlands Farm on 27 April 2003; and an impressive flock of 18 calling that flew south-west over Barcombe on 11 August 2004.
Redshank	Unusual	Y	Seen at Barcombe Reservoir on seven dates (all singles except two on 10 March 2013)
Greenshank	Unusual		Sightings of single passage birds at Barcombe Reservoir on five dates. Also a flock of nine flew south-west calling over Barcombe on 5 September 2004. One over the River Ouse calling as it flew south on 7 August 2005. One at Knowlands Farm on 6 September 2009.
Green Sandpiper	Scarce or local	Y	A regular visitor on passage and in winter to Barcombe Reservoir (maximum five). Heard over Barcombe on 5 August 2003 and one seen flying over there on 19 August 2012. Also seen at Knowlands Farm on 23 August and 13 September 2019.
Wood Sandpiper	Unusual	Y	Two records of single birds at Barcombe Reservoir on 3 August 2002 and 5 August 2019.
Common Sandpiper	Scarce or local	Y	A regular visitor on passage to Barcombe Reservoir (maximum nine).
Mediterranean Gull	Unusual	Y	Increasing with regular sightings of small numbers usually along with other gulls over the parish and at Barcombe Reservoir e.g., three (two adults and a first year) over Barcombe calling on 24 May 2015 and a flock of at least five over the village recreation ground on 17 April 2017.

Species	Estimate of status	Photo	Comments
Laughing Gull	Unusual		One first summer bird was at seen at Barcombe Reservoir on 29 & 30 July 2006. This North American gull is rare nationally and the sighting was part of an influx into the country during the year. The individual had previously been seen at Arlington Reservoir.
Little Gull	Unusual		At Barcombe Reservoir, sightings comprise: six on 21 April 2000; five on 22 October 2000; one on 2 November 2002; two on November 2006; and two on 16 February 2014.
Black-headed Gull	Common	Y	Common during the winter around the parish with a maximum count of 1,000 at Barcombe Reservoir where there is a regular roost. Because it breeds well away from the parish, sightings are infrequent during the breeding season.
Common Gull	Common	Y	Common during the winter around the parish with a maximum count of 1,000 at Barcombe Reservoir. Rarely, if ever, seen during the late spring / early summer.
Lesser Black-backed Gull	Common	Y	Regularly seen passing over and at Barcombe Reservoir though always in small numbers. Often in the company of Herring Gulls.
Herring Gull	Common	Y	Large flocks can be seen flying over the parish to roost or on feeding flights in winter. In the past few years, there has been a trend for a few individuals to remain around Barcombe. It is uncertain as to whether this is a prelude to attempted breeding in the village.
Yellow-legged Gull	Unusual		One was at Barcombe Reservoir on 7 December 2014. Probably overlooked.
Iceland Gull	Unusual		One first winter bird was at Barcombe Reservoir on 18 February 2007.
Greater Black-backed Gull	Scarce or local		Seen flying over and at Barcombe Reservoir though in small numbers. Mainly in winter.
Common Tern	Unusual	Y	Sightings at Barcombe Reservoir: one on 27 April 2002; one on 17 April 2003 (Common or Arctic Tern); one on 5 June 2005; two on 16 April 2006; and two on 18 July 2010. One (assumed Common) flew over Barcombe on 25 April 2003. One (though two were seen earlier in the day) at Knowlands Farm pond on 21 July 2018.
Black Tern	Unusual		Sightings at Barcombe Reservoir: one on 28 August 2000; one on 3 May 2003; and one on the very late date of 12 November 2005. This latter bird was eventually found dead in an emaciated state by the water bailiff. With hindsight, the exceptionally late date should have prompted an identification check for American Black Tern.
Feral Rock Dove	Scarce or local		Occasionally seen flying over.
Stock Dove	Scarce or local	Y	A widely seen or heard resident but rarely in any numbers and tends to be quite shy. Fifteen at Knowlands Farm on 28 April 2020 was a good count. Small numbers fly over amongst the large Woodpigeon movements in early November. Breeds in the parish. A juvenile was seen bathing in a garden pond at Barcombe on 8 September 2020.

Species	Estimate of status	Photo	Comments
Woodpigeon	Common	Y	Extremely common resident and increasingly seen, and even nesting, in gardens. The generally southerly movements over Barcombe early morning in early November can be spectacular. For example, 19,000 flew south-east over Barcombe on 5 November 2017 in just 45 minutes and thousands flew over during 1-4 November 2006. There was an unusual spring gathering of about 200 in a newly-sown field just west of the old railway track (north-west of Barcombe) on 11 April 2020.
Collared Dove	Common	Y	A widely seen resident in relatively small numbers. Breeds in the parish.
Turtle Dove	Unusual		One of the most depressing stories of Barcombe's (and indeed the UK's) birdlife. Up to and including 2005, it was regularly seen and heard during the summer months within the parish including over Barcombe. By 2008, there was just one sighting (Knowlands Farm) and singles were also seen in 2009 (Barcombe village), 2012 (Gallybird on the very edge of the parish) and 2013 (near Gallybird). This attractive summer visitor with a distinctive purring song is now probably extinct in the parish, part of a national and European decline.
Cuckoo	Scarce or local	Y	This is probably one of the best known summer visitors given the male's distinctive song. It is just about holding on within the parish but is not now very common and in some years only seen or heard infrequently. During the last twenty one years, the average first arrival date noted in Barcombe was 30 April (earliest 13 April, though one at Scobell's Farm on 7 April 2004, and the latest 1 June). An absence of sightings of juveniles (one seen at Barcombe Reservoir on 28 August 2000) suggests that breeding is now rarely successful in the parish.
Barn Owl	Scarce or local		Breeds in the parish but is encountered relatively infrequently unless close to a nest site; even then, they can be very secretive. Has bred in nest boxes at Barcombe Reservoir (next to the River Ouse), Camoys Court Farm and at Knowlands Farm. Occasionally seen flying over Barcombe and seen in the headlights at night on roads around the village.
Little Owl	Scarce or local	Y	Probably breeds most years in the parish but seems to be decreasing. In some years, the strident call is heard regularly around Barcombe at night and in the spring, its plaintive song.
Tawny Owl	Common	Y	This widespread resident is heard much more frequently than seen. It is a familiar sound of clear, late winter nights around Barcombe. It is sometimes heard during the daytime. Its nesting distribution seems quite widespread within the parish.
Short-eared Owl	Unusual		One was flying high over Barcombe Reservoir on 19 October 2002.
Long-eared Owl	Unusual		One was seen along the old railway track north-west of Barcombe on 10 December 2000.

Species	Estimate of status	Photo	Comments
Swift	Common	Y	Decreasing with few if any pairs now arriving from Africa each year to breed. During the last twenty years, the average first arrival date over Barcombe has been 28 April (earliest 18 April and the latest 10 May). There is some indication that first arrivals have been getting later during the last 21 years. Many of the sightings now may relate to birds feeding over the village from elsewhere e.g., Lewes and other nearby villages. A total of about 250 over Barcombe on 27 July 2014 was a good count.
Kingfisher	Scarce or local	Y	This species is decreasing and now quite scarce. It has bred but its current breeding status is uncertain. An occasional visitor to gardens in Barcombe when heavy rain stirs up waterways making fishing difficult. Once a regular feature of visits to Barcombe Reservoir, one on 16 September 2019 was the first there since 13 September 2015.
Green Woodpecker	Common	Y	A fairly widespread resident that is quite often heard or encountered during its visits to lawns during wet conditions. Almost certainly breeds in a number of locations.
Great Spotted Woodpecker	Common	Y	A widespread resident breeder e.g., six drumming in Knowlands Wood on 30 March 2019. It is a frequent visitor to garden bird feeders.
Lesser Spotted Woodpecker	Unusual	Y	This secretive species may still breed within the parish but its exact status is uncertain. Visits to our Barcombe garden probably relate to dispersing juveniles: one on 1 July 2000; one on 17 June 2001; two on 26 June 2001; one on 7 July 2012; and one on 29 June 2013 with two there next day. Very infrequently encountered in or around Knowlands Wood e.g., single females on 3 December 2010, and 26 November and 2 December 2017.
Sky Lark	Scarce or local	Y	A few singing males still hold territory within the parish. This species is a resident but with numbers augmented in winter e.g., a total of about 20 at Barcombe Reservoir on 9 December 2001 and 25 at Knowlands Farm on 17 November 2019.
Sand Martin	Scarce or local	Y	A scarce passage migrant though larger numbers can appear over Barcombe Reservoir on occasion e.g., 300 on 13 September 2009.
Swallow	Common	Y	This well-known summer visitor is still a widespread breeder in the parish though there seems to have been an overall decline during the past few years. It is also a widespread passage migrant. During the last twenty one years, the average first arrival date over Barcombe has been 16 April (earliest 22 March and the latest 8 May). Large gatherings over Barcombe Reservoir sometimes occur on migration e.g., 250 on 15 May 2017.

Species	Estimate of status	Photo	Comments
House Martin	Common	Y	This summer visitor is just about hanging on as a breeding species in the parish following a disastrous crash in 2018. Apart from in Barcombe, it previously nested above the entrance to one of the buildings at Barcombe Reservoir. It is also a widespread passage migrant. During the last twenty one years, the average first arrival date over Barcombe has been 22 April (earliest 2 April and the latest 10 June). Large gatherings over Barcombe Reservoir sometimes occur on migration e.g., 250 on 11 September 2017. There were also 150 over Barcombe on 15 September 2013. A gathering of about 500 hirundines at Knowlands Farm on 6 September 2020 was estimated to comprise 80% this species and 20% Swallow.
Meadow Pipit	Scarce or local	Y	This rather inconspicuous species occurs in small numbers mainly in winter and on passage at sites such as Barcombe New WTW, Knowlands Farm (e.g., 30 on 24 December 2018) and Barcombe Reservoir (maximum 30 on 25 September 2004). Additionally, small numbers are sometimes seen flying over Barcombe on passage.
Rock Pipit	Unusual	Y	Two were at Barcombe Reservoir on 21 September 2020. Inland records are very unusual in Sussex.
Water Pipit	Unusual		One was seen during the winters of 2004/5 – 2010/11 at Barcombe Reservoir and was assumed to be the same bird returning each year. If this was true, it would have been at least 6.5 years old when last seen, a considerable age for such a passerine.
Yellow Wagtail	Unusual		This passage migrant at Barcombe Reservoir has been noted on 14 dates with a maximum of four birds seen. Additionally, there were three autumnal records of birds passing over Barcombe and one was at Barcombe New WTW on 1 September 2013.
Grey Wagtail	Scarce or local	Y	A few pairs usually breed in the parish e.g., at Barcombe Reservoir and just on the edge of the parish at Isfield Weir. This species is resident but with numbers augmented on passage and in winter. A total of about 15 at Barcombe Reservoir on 6 July 2003 was exceptional and presumably reflected a good breeding season. It is a regular visitor to garden ponds in Barcombe.
Pied Wagtail	Common	Y	This species regularly nests in the parish. Although a resident, its numbers are augmented on passage and in winter. A total of about 25 at Barcombe Reservoir on 10 August 2002 was a good count there. However, large numbers congregate at Barcombe New WTW in winter e.g., 75 on 2 January 2017. There were 38 on the recreation ground on 28 August 2011. The continental subspecies alba (White Wagtail) is rare with one on 5 April 2003 at Barcombe Reservoir plus a recent record there of one on 20 May 2019.
Wren	Common	Y	A widespread resident species e.g., 12 singing males along the 1.5 km of the old railway track on 19 April 2019 and 16 singing males in Knowlands Wood on 21 April 2020.
Dunnock	Common	Y	A widespread if inconspicuous resident species.

Species	Estimate of status	Photo	Comments
Robin	Common	Y	A widespread and familiar resident species. As with many of our familiar garden birds, numbers are augmented by incoming birds during the autumn and winter.
Nightingale	Scarce or local	Y	This summer visitor is one of the jewels of the parish though its numbers along the old railway track north-west of Barcombe (it principle site) vary depending on the suitability of the vegetation succession. Singing males have numbered (approximate maxima based solely on personal counts): singles in each of 2009-2012; two in 2013; five in 2014; three in 2015; four in both 2016 and 2017; five in 2018; six in 2019 and at least six in 2020 (when there was also at least one on the track south of Barcombe). Additional birds occasionally hold territory away from, but nearby the old railway track e.g., on the edge of Barcombe recreation ground, on the boundary of Bridgelands and the 'Wild About Barcombe' site, and at the old WTW. These birds can be heard on still spring evenings from our garden on the north side of Barcombe. In total, there were at least nine singing males around Barcombe in 2020 making this an important site in the county for the species though, as stated, is dependent on the maintenance of habitat at the right stage of succession. Early arrival dates were 12 April 2016, 11 April 2017 and 7 April 2020. Once they stop singing in June, the presence of birds is given away occasionally when they give their croaking alarm call. A very recently fledged bird was seen on the old railway track just south of Knowlands Wood on 14 June 2020.
Black Redstart	Unusual		Surprisingly there is just one record of this species – a single at Barcombe Reservoir on 3 January 2000 (though see Table C).
Redstart	Unusual	Y	An unusual passage bird with just three records: singles at Barcombe Reservoir on both 28 August 2005 and 16 September 2019, and at Knowlands Farm on 6 September 2018.
Whinchat	Unusual	Y	An unusual passage bird. Five records at Barcombe Reservoir: two on 30 August 1999 and singles on 2 September 2001, 20 September 2003, 25 April 2015 (a smart male) and 13 September 2015. Singles were seen at Knowlands Farm on 1 September 2013 and 28 August 2018 and there were four there (with a Stonechat) on 6 September 2020.
Stonechat	Unusual	Y	A surprisingly scarce bird. Although there were 22 records at Barcombe Reservoir during 1999-2009, there have been none since. One was seen to the west of the reservoir on 31 January 2016 and a pair were there on 29 December 2019. Singles were at Knowlands Farm on 17 November 2019 and (with Whinchats) on 6 September 2020.
Wheatear	Unusual	Y	There were just eight records of this fairly common migrant species. There have been six singles at Barcombe Reservoir, the last on 25 August 2013. At Knowlands Farm, singles were seen on both 16 April 2020 and 5 September 2020.
Blackbird	Common	Y	A common resident species augmented by incoming birds in winter.
Fieldfare	Common	Y	A common winter visitor sometimes in large numbers, arriving in late October and usually leaving in March.

Species	Estimate of status	Photo	Comments
Song Thrush	Common	Y	A common resident species and one of the first to start singing in the year. It seems to have recovered from the crash in its numbers some years back. Nine were in song in Knowlands Wood on 21 April 2020.
Redwing	Common	Y	A common winter visitor sometimes in large numbers, arriving in mid-late October and usually leaving in March.
Mistle Thrush	Scarce or local	Y	A scarce resident species with a beautiful, haunting song heard in late winter and early spring. It is often only encountered every few months within the parish. Family parties of this species gather together in mid-late summer which may account for 22 seen at Barcombe Reservoir on 13 August 2000, 29 seen there on 11 August 2002 and 15 there on 19 July 2015.
Sedge Warbler	Unusual		This summer visitor and passage migrant was heard singing at Barcombe Reservoir in 2000, 2003 and 2006. It is uncertain whether these were breeding birds or just passage birds exploring potential breeding territory. There was one there on 11 August 2002. A singing bird was on the old railway track north-west of Barcombe on 14 April 2020 and another was seen in a field on Knowlands Farm on 9 August 2020.
Reed Warbler	Scarce or local		This summer visitor and passage migrant was heard singing at Barcombe Reservoir in most years up to and including 2013 and since then in 2019; this probably reflects breeding. May also breed in ditches at Barcombe Mills most years. The species has occasionally been heard on passage at Knowlands Farm and along the old railway track.
Lesser Whitethroat	Scarce or local	Y	Regular breeding summer visitor in very small numbers. Also a passage migrant.
Whitethroat	Common	Y	This regular summer visitor in small numbers seems to be just about holding its own as a breeding species in the parish. Also a passage migrant.
Garden Warbler	Common	Y	Regular breeding summer visitor in small numbers e.g., five in song within Knowlands Wood on both 15 May 2016 and 27 April 2020 with also five in song on the old railway track north-west of Barcombe on the latter date. Also a passage migrant.
Blackcap	Common	Y	Regular breeding summer visitor in moderate numbers e.g., 11 in song along the old railway track on 11 April 2020. Also a winter visitor in small numbers (e.g., in gardens) and a passage migrant.
Chiffchaff	Common	Y	Regular breeding summer visitor in moderate numbers e.g., seven in song along old railway track on 21 April 2018. Also a winter visitor in small numbers (e.g., Barcombe and Barcombe New WTW) and a passage migrant.
Willow Warbler	Scarce or local	Y	Regularly heard singing in small numbers when they arrive in late March / April though how often they stay on to breed is unclear. Only one was noted in 2020 – in Agmond's Wood on 8 May. A regular early autumn passage migrant. One in spring 2019 along the old railway track combined part of the Chiffchaff's song into its own.
Goldcrest	Common	Y	A fairly common breeding resident, passage migrant and winter visitor.

Species	Estimate of status	Photo	Comments
Firecrest	Unusual	Y	One on the old railway track next to Knowlands Wood on 23 December 2017, one at Barcombe New WTW on 23 February 2019, one nearby on 1 January 2020, one in our Barcombe garden on 2 January 2020 and one in Knowlands Wood on 18 January 2020.
Spotted Flycatcher	Unusual	Y	This summer visitor in very small numbers and passage migrant was regularly present in the summer (and presumably breeding) at Barcombe up to and including 2007. Since then, there have only been two sightings there on autumn passage (22 September 2013 and 29 August 2016). Consequently and sadly, it appears to be now lost, in line with a national decline. Occasionally seen elsewhere on passage in the autumn e.g., at Barcombe Reservoir on 7 September 2018, an adult feeding a fully-grown juvenile near Spithurst Churchyard on 24 August 2019, six at Knowlands (three each at the Wood and Farm) on 13 September 2019, three on Knowlands Farm on 16 August 2020, one at Barcombe Mills on 24 August 2020 and one near the old WTW (just north of Barcombe) on 5 September 2020.
Pied Flycatcher	Unusual	Y	A passage migrant on its way south was at Barcombe Reservoir on 24 August 2002 and another was at Knowlands Farm on 16 August 2020.
Long-tailed Tit	Common	Y	Common breeding resident. Has been known to nest in our Barcombe garden. Occasionally visits peanut feeders in the garden.
Coal Tit	Common	Y	Common breeding resident.
Marsh Tit	Unusual		One was near Isfield Weir on 20 January 2020.
Blue Tit	Common	Y	Very common and familiar breeding resident.
Great Tit	Common	Y	Very common breeding resident.
Nuthatch	Common	Y	Fairly common breeding resident.
Treecreeper	Common	Y	Fairly common breeding resident.
Jay	Common	Y	Fairly common breeding resident. Numbers are augmented in some autumns by continental birds.
Magpie	Common	Y	Very common breeding resident.
Jackdaw	Common	Y	Very common breeding resident. From late summer and through winter, there is dusk movement of birds south over Barcombe to their roost in woodland near Glyndebourne e.g., 1,000 on 19 October 2018 and 1,670 on 23 February 2019.
Rook	Common	Y	Very common breeding resident. Rookeries include those in Barcombe and at Barcombe Mills.
Carrion Crow	Common	Y	Very common breeding resident.
Raven	Scarce or local	Y	Probably now breeds in the parish with regular sightings since 2011 e.g., a family party of five north of Knowlands Wood on 30 May 2020. A pair were seen in rolling display flight over Barcombe with a third bird on 24 February 2019. This increase is in line with an increase across much of south-east England.



Species	Estimate of status	Photo	Comments
Starling	Common	Y	Fairly common breeding resident augmented by incoming birds in the autumn and winter.
House Sparrow	Common	Y	Fairly common breeding resident though with a patchy distribution. A total of 75 at Barcombe Reservoir on 16 September 2019 was a good count.
Tree Sparrow	Unusual		This species previously bred but in line with a serious decline across south-east England there was only one sighting since 1999: one at Barcombe Reservoir on 10 October 2004.
Chaffinch	Common	Y	Fairly common breeding resident with numbers augmented by winter visitors. The spring-plumaged male is a much-underrated bird.
Brambling	Unusual		Rather surprisingly, there have been rather few records of this finch which is an autumn and winter visitor; it is almost certainly under-recorded. One flew over Barcombe on 10 November 2001, one was at Barcombe Reservoir on 5 November 2005, one was heard near the new village hall on 2 November 2017 and one was in Knowlands Wood on 18 March 2018.
Greenfinch	Common	Y	Fairly common breeding resident despite declines elsewhere nationally.
Goldfinch	Common	Y	Very common breeding resident with numbers augmented by winter visitors.
Siskin	Unusual	Y	This finch is an infrequent autumnal passage migrant and winter visitor (through to early spring) with sightings from Barcombe, Barcombe Reservoir, Knowlands Wood and near Isfield Weir. The largest count was one of about 50 at Barcombe Reservoir on 4 December 2005. Around Barcombe, larger counts were 15 on both 21 September 2008 and 9 October 2009.
Linnet	Common	Y	Fairly common breeding resident. Nested on the side of our garden shed in Barcombe in 2000. The largest count was 100 in a field next to Barcombe Reservoir on 15 February 2016. Another flock of 16 was at Knowlands Farm on 20 August 2018.
Redpoll	Unusual	Y	This finch is an infrequent winter and autumnal passage migrant in small numbers and has been seen at Barcombe, Barcombe Reservoir and Knowlands Wood.
Crossbill	Unusual		There have been four sightings over Barcombe of this pine-cone specialist finch: three on 17 August 2003; four on 8 July 2012; four on 17 October 2013; and two on 21 June 2020. There was also a female near Agmond's Wood on 3 February 2019.
Bullfinch	Common	Y	Fairly common breeding resident. The old railway track is a reliable site to see this species where small flocks are sometimes seen e.g., eight on 15 February 2018.
Hawfinch	Unusual	Y	There was an exceptional national influx during the autumn of 2017 and winter of 2017/18 of this large, well-marked finch with a very powerful beak. The influx was heralded with one flying over Barcombe on 30 October 2017 and two over next day. Favoured areas were the old railway track, Knowlands Wood and Knowlands Farm with the highest count being one of 18 at the latter site on 26 November 2017. One was seen in Barcombe on 4 & 5 January 2018 and one was at St Mary's churchyard on 7 February 2018. The last was at Knowlands Farm on 18 March 2018.

Species	Estimate of status	Photo	Comments
Yellowhammer	Common	Y	Fairly common breeding resident. This species seems to be hanging on in the parish despite dramatic decreases in populations elsewhere nationally. Flocks of 25 at Knowlands Farm on both 17 April 2016 and 17 November 2019, and 45 on 1 January 2020 were exceptional.
Reed Bunting	Common	Y	This bunting has bred e.g., near the River Ouse and probably still does so. It is a fairly common resident / visitor.

#### B. Species not listed above that are known to have been recorded within the parish since 1966

A key reference is *David C. Lang (1995). Thirty Years at Barcombe Mills Reservoir – One Man’s View. P154-161. The Sussex Bird Report number 48, R.T. Pepper (Recorder) & Mrs S.J. Patton (Editor). Sussex Ornithological Society.* Other key references are (a) the Sussex Ornithological Society’s database (and supplied by its Recorder), its annual Sussex Bird Reports and the sightings page of its website, and (b) data present in the Sussex Biodiversity Records Centre (SxBRC) which also incorporates the SOS data. A few reports made by individuals are also listed. Species with an asterisk have been included though not ratified by the SOS or at a national level.

Species	Estimate of status		Comments
Black-throated Diver	Unusual		A juvenile at Barcombe Reservoir 19-25 November 1990 and one there on 28 March 2004 (SxBRC).
Red-necked Grebe	Unusual		One at Barcombe Reservoir on 26 December 1989 (David Lang, 1995 reference).
Slavonian Grebe	Unusual		One at Barcombe Reservoir on 23 December 1978 (David Lang, 1995 reference). One at Barcombe Reservoir on 5, 7 & 21 December 1997 (John Gowers <i>et al.</i> ).
Gannet	Unusual		One found dead under power lines near Barcombe on 13 January 1995 (Clark, SOS database).
Shag	Unusual		One at Barcombe Reservoir on 17 March 1991 (David Lang, 1995 reference) and 17 January 1993 (John Holt, SOS database). An immature was at Barcombe Reservoir on 22 November 1995 (Whitcomb, SOS database).
Bittern	Unusual		One at Barcombe Reservoir on 6 November 1974 (David Lang, 1995 reference). One at Barcombe Mills on 11 January 1985 (SOS database).
Purple Heron	Unusual		One was at Knowlands Farm on 2 May 2011 (Nick Lear)*.
Bewick’s Swan	Unusual		Barcombe Reservoir (David Lang, 1995 reference). Most recent record – two there on 5 January 2002 (Bob Edgar, SOS database).
Whooper Swan	Unusual		Two at Barcombe Reservoir on 30 September 1973 (David Lang, 1995 reference). Five at Barcombe Reservoir on 24 January 1987 (SOS database).
Pink-footed Goose	Unusual		One at Barcombe Reservoir on 3 December 1978 (David Lang, 1995 reference).
Eider	Unusual		One at Barcombe Reservoir on 25 October 1988 (SOS database). Also there, 13 on 16 December 1995 and four there next day (Bob Edgar, SOS database).

Species	Estimate of status	Comments
Goshawk	Unusual	A juvenile female was at Barcombe Reservoir on 14 September 1998 (Robin Pepper, Sussex Bird Report).
Quail	Unusual	One south-east of Barcombe on 28 June 2015 (Gibbs, SOS database).
Oystercatcher	Unusual	At Barcombe Reservoir, singles on 28 February 1998 and 18 August 1998 (Robin Pepper, SOS database), 16 March 2000 (SxBRC) and 1 September 2003 (SxBRC). One at Barcombe on 4 September 2013 (SxBRC).
Avocet	Unusual	Singles at Barcombe Reservoir on 20 June 2005 (SOS database) and 19 April 2009 (John Gowers).
Grey Plover	Unusual	One at Barcombe Mills on 23 November 1993 (Robin Pepper, SOS database). Barcombe Reservoir (David Lang, 1995 reference).
Knot	Unusual	Barcombe Reservoir (David Lang, 1995 reference).
Ruff	Unusual	Barcombe Reservoir (David Lang, 1995 reference).
Jack Snipe	Unusual	Barcombe Reservoir (David Lang, 1995 reference). Also, one near Barcombe on 4 January 2002 (David Lang, SOS database) and one at Knowlands Farm in February 2019 (Nick Lear).
Black-tailed Godwit	Unusual	Barcombe Reservoir (David Lang, 1995 reference). One was at Barcombe Reservoir on 1 August 2005 (Sussex Bird Report).
Bar-tailed Godwit	Unusual	One at Barcombe Reservoir on 18 May 1992 (Bob Edgar, SOS database) and one there on 28 April 1996 (Bob Edgar & John Gowers, SOS database).
Curlew	Unusual	Barcombe Reservoir (David Lang, 1995 reference). One at Barcombe Reservoir on 10 February 2002 (Bob Edgar, SOS database). One at Barcombe on 15 June 2007 (Sussex Bird Report) and one flying west at Scobells Farm on 22 July 2007 (Robin Pepper, SOS database).
Spotted Redshank	Unusual	Barcombe Reservoir (David Lang, 1995 reference).
Spotted Sandpiper	Unusual	One at Barcombe Reservoir from 7-13 November 1977 (David Lang, 1995 reference).
Turnstone	Unusual	Barcombe Reservoir (David Lang, 1995 reference).
Grey Phalarope	Unusual	One at Barcombe Reservoir on 23 November 1985 (David Lang, 1995 reference).
Kittiwake	Unusual	One at Barcombe Reservoir on 12 January 1991 (Bob Edgar, SOS database) and one there on 2 & 9 August 1998 (John Holt & Robin Pepper, SOS database).
Arctic Tern	Unusual	One at Barcombe Reservoir on 11 September 1994 (David Lang, 1995 reference).
Little Tern	Unusual	One at Barcombe Reservoir on 23 April 2001 (David Lang, SOS database).
White-winged Black Tern	Unusual	One at Barcombe Reservoir on 19 May 1984 (Bob Edgar - David Lang, 1995 reference).
Hoopoe	Unusual	One at Barcombe Mills on 29 May 2013 (Richards, SOS database).
Wryneck	Unusual	One at Sutton Hall on (5-) 23 August 2005 (Sussex Bird Report). One at Barcombe on 4 September 2013 (David Lang, SOS database).

Species	Estimate of status	Comments
Tree Pipit	Unusual	One at Scobells Farm on 15 September 1995 (Robin Pepper, SOS database), one at Barcombe Reservoir on 14 April 1996 (John Gowers, SOS database) and one at Barcombe on 30 September 2007 (Chapman, SOS database).
Wood Warbler	Unusual	One at Barcombe Reservoir on 17 August 1986 (David Lang, 1995 reference) and one there on 27 August 2000 (David Lang, SOS database).
Great Reed Warbler	Unusual	One was at Barcombe Reservoir in spring 1984 (Bob Edgar)*.
Golden Oriole	Unusual	One heard and seen in Barcombe on 2 May 2017 (Nick Gant, Sussex Bird Report).
Willow Tit	Unusual	Previously present (and as recently as 2009) on the Sutton Hall Estate (John Sclater <i>per</i> Nick Lear). Unfortunately, this species is now extinct or nearly extinct in Sussex.
Great Grey Shrike	Unusual	One near Agmond's Wood on 28 October 2018 (ref. David Williams).
Hooded Crow	Unusual	One seen at Clay Hill just on the parish boundary on 16 February 1985 (Sussex Bird Report).
Snow Bunting	Unusual	One at Barcombe Reservoir on 6 December 1968 (David Lang, 1995 reference) and one there on 9 October 1977 (SxBRC).
Corn Bunting	Unusual	Barcombe Reservoir (David Lang, 1995 reference). Also one at Barcombe Mills on 17 June 2018 (Stark, SOS database).

**C. Selected records from other observers for species already included in table A.**

References as for table B.

Species	Estimate of status	Comments
Red-throated Diver	Unusual	Singles at Barcombe Reservoir were on 1 January 1989 (David Lang, 1995 reference), 4 February 1996, 13 March 1996, 23 February 1997 and 20 October 2006 (various observers, SOS database).
Black-necked Grebe	Unusual	Singles at Barcombe Reservoir on 28 August 1996 (Whicomb, SOS database) and Barcombe Mills on 16 January 1997 (Robin Pepper, SOS database).
Cormorant	Common	A count of 120 at Barcombe Reservoir on 31 December 2000 (John Gowers).
White-fronted Goose	Unusual	52 at Barcombe Reservoir on 15 December 1985 (David Lang, 1995 reference).
Shelduck	Unusual	At Barcombe Reservoir, larger counts were 13 on 28 August 1995, 12 on 13&14 January 1996 and 23 on 30 March 1996 (SOS database).
Wigeon	Scarce or local	1,222 at Barcombe Reservoir on 1 February 1970 (David Lang, 1995 reference).

Species	Estimate of status	Comments
Garganey	Unusual	At Barcombe Reservoir, records include 16 on 4 September 1966 (David Lang, 1995 reference), six (three pairs) on 29 March 1981, one on 16 May 1984, one on 14 March 1986 (SOS database) and one on 25 July 2001 (Peter Wilson, SOS database).
Long-tailed Duck	Unusual	One at Barcombe Reservoir on 17 April 2011 (John Gowers).
Scoter	Unusual	At Barcombe Reservoir, three on 6 April 1970 and one on 28 January 1996 (David Lang, 1995 reference), and one on 21 March 1997 (Robin Pepper, SOS database).
Smew	Unusual	At Barcombe Reservoir, five on 23 February 1985, one on 17 December 1995, one on 19 January 1996, one on 28 January 1996, two on 1 February 1996, one on 29 December 1996, one on 8 January 1997 and two on 19 January 2009 (various observers, SOS database). Additionally, one at Barcombe Reservoir on 25 January 1985 and one there on 31 December 1988 (David Lang, 1995 reference).
Goosander	Unusual	At Barcombe Reservoir, a large count was 17 on 12 January 1997 (Bob Edgar, SOS database).
Marsh Harrier	Unusual	One at Barcombe Reservoir on 14 August 1987 and 20 August 2005 (SOS database).
Osprey	Unusual	Includes one at Barcombe Reservoir on 12 September 2004 (John Gowers).
Grey Partridge	Unusual	Most recent records were of two near Barcombe Reservoir on 1 June 2015 (Luckhurst, SOS database), at Barcombe on 21 October 2018 (SOS database) and two in a stubble field near Barcombe on 6 April 2020 (RDP, SOS website).
Water Rail	Unusual	One at Barcombe Reservoir between 17 December 2000 and 7 January 2001 (John Gowers). One at Knowlands Farm on 9 April 2019 (Nick Lear).
Ringed Plover	Unusual	At Barcombe Reservoir, one on 25 May 1978 (SOS database) and 11 March 2002 (Robin Pepper, SOS database).
Lapwing	Scarce or local	Two pairs breeding and one successful on second attempt in fields near The Anchor in 2019 (James Wallis).
Little Stint	Unusual	One at Barcombe Reservoir on 22 September 1973 (David Lang, 1995 reference).
Whimbrel	Unusual	One at Scobells Farm on 15 May 1995 and 27 April 2000 (Robin Pepper, SOS database), two at Barcombe Reservoir on 28 April 1996 (Bob Edgar, SOS database) and 10 at Barcombe Reservoir on 21 April 2006 (David Lang, SOS database).
Wood Sandpiper	Unusual	At Barcombe Reservoir, singles on 13 August 2006 (David Lang, SOS database) and 29 July 2007 (John Holt, SOS database).
Mediterranean Gull	Unusual	One at Barcombe Reservoir on 2 January 1971 (David Lang, 1995 reference).
Black Tern	Unusual	Include four at Barcombe Reservoir on 9 September 1998 (Robin Pepper, SOS database).
Short-eared Owl	Unusual	One at Barcombe on 24 December 2019 (SxBRC).
Long-eared Owl	Unusual	One or two used to roost some years back in Knowlands Wood (Nick Lear).

Species	Estimate of status	Comments
Blue-headed Wagtail (race of Yellow Wagtail)	Unusual	Singles at Barcombe Reservoir on 7 May 1974, 21 April 1978 and 18 May 1985 (SOS database).
Black Redstart	Unusual	Included in a handful of records are singles at Barcombe Reservoir on 18 November 1979 and 13 March 1983 (David Lang, 1995 reference), at Scobells Farm on 19 March 1994, 25 March 1999 and 5 April 2001 and at Barcombe Reservoir on 5 April 1998 and 12 March 1999 (all, Robin Pepper, SOS database).
Wheatear	Unusual	One just outside the parish between Bridge Farm and Upper Wellingham on 17 April 2020 (Bernard Booth).
Firecrest	Unusual	One at Barcombe Reservoir on 1 November 1995 (John Gowers), one at Camoys Farm on 27 February 1996 (David Lang, SOS database), one in Barcombe on 29 September 2002 (SOS database), one at Scobells Farm on 4 October 2002 (Robin Pepper, SOS database) and one at Barcombe on both 12 December 2002 and 1-4 August 2004 (David Lang, SOS database).
Pied Flycatcher	Unusual	Singles at Scobells Farm on 26 August 1995, 26 April 1997 (a male), 26 August 1997, 19 & 21 September 2004 (all Robin Pepper, SOS database), one near the Anchor Inn on 14 August 2004 (Robin Pepper, SOS database), singles at Barcombe Reservoir on 2 September 1996 and 25 August 1997 (Bob Edgar, SOS database), 30 August 2004 (John Gowers) and 28 August 2005 (SOS database), and one below the new village hall on 8 September 2020 (RDP, SOS website).
Marsh Tit	Unusual	Barcombe Reservoir (David Lang, 1995 reference). A pair was breeding in Knowlands Wood until about 15 years ago (Nick Lear).
Crossbill	Unusual	Two near Barcombe on 11 July 2020 (RDP, SOS website).
Hawfinch	Unusual	One at Barcombe on 8 August 1988 (SOS database).
Tree Sparrow	Unusual	Large counts at Barcombe Reservoir include 100 on 29 December 1976 and 200 on 18 February 1979 (SOS database). A more recent sighting was of one at Scobells Farm on 3 March 2015 (Robin Pepper, SOS database).

**D. Species not listed above that relate to very old records - see Barcombe Records, 1999, Women's Institute referring back to a 1953 village scrapbook (WI) and the Sussex Biodiversity Records Centre database (SxBRC)**

Corncrake (WI), Great Snipe (WI), Nightjar (WI), 'Shrike' – presumed Red-backed (WI), Woodchat (2 May 1901, SxBRC) and Woodlark (WI). There are four additional historical records of interest for birds that may actually have been on the very edge of Barcombe Parish: a Night Heron shot at Cooksbridge prior to 13 May 1816; a Roller shot at Isfield on 12 June 1870; an Alpine Swift at Isfield in 1904 and 18 Cranes over Isfield on 4 November 1963 during a large invasion of this species (all SxBRC).

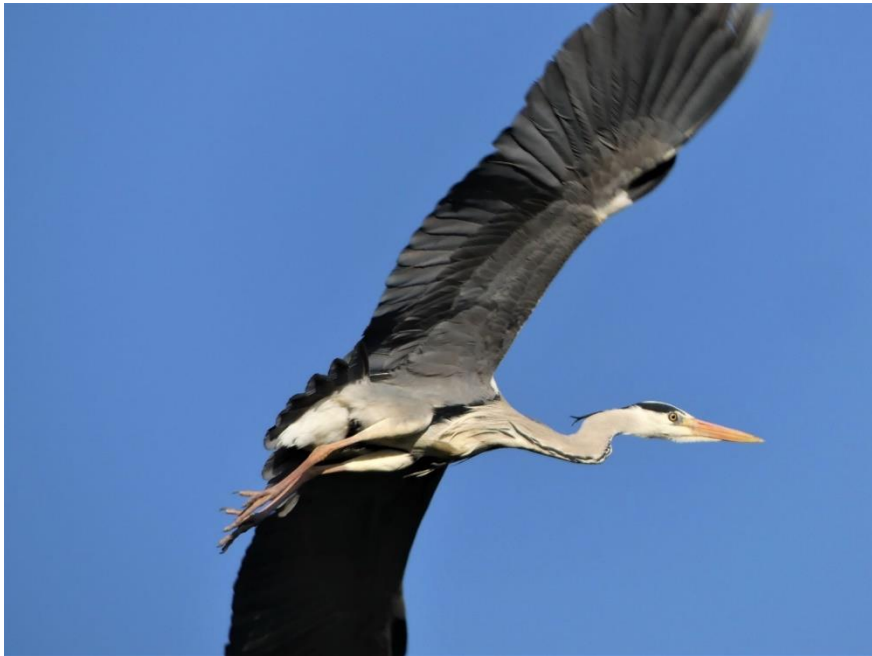
**E. A selection of the escaped (or presumed escaped) species recorded in the parish (mainly at Barcombe Reservoir)**

American Wigeon  
Australian Wood Duck  
Bahama Pintail  
Bar-headed Goose  
Black-necked Swan  
Black Swan  
Blue Snow Goose  
Carolina Duck

Chilean Teal  
Chinese Spotbill  
Cuban Flamingo  
Emperor Goose  
Farmyard Goose  
Helmeted Guineafowl  
Maned Goose  
Pelican sp.

Red-breasted Goose  
Red-crested Pochard (see Table A)  
Ring-necked Parakeet (escaped)  
Ringed Teal  
Ross's Goose  
Rosy-billed Pochard  
Ruddy Shelduck  
Sharp-winged Teal

Snow Goose  
White-cheeked Pintail  
Wood Duck  
Yellow-billed Teal  
Pintail x Mallard hybrid  
Canada Goose hybrid



**Total wild bird species recorded in parish:**

- Since 1966 (those in tables A & B) =  $158+41 = 199$
- Ever (above plus those in table D) =  $199+6 = 205$

**Images of 111 species – all taken in Barcombe Parish**



**Little Grebe, Knowlands Farm, 17 March 2018**



**Great Crested Grebe, Barcombe Reservoir, 23 April 2019**



**Cormorant (immature), Barcombe Reservoir, 20 May 2019**





**Little Egret, Barcombe Reservoir, 6 July 2020**



**Mute Swan, Barcombe Mills, 3 June 2015**



**Grey Heron, Knowlands Farm, 17 March 2018**



**White-fronted Goose (family party with Tufted Duck behind), Barcombe Reservoir, 17 October 2016**



**Greylag Goose, near Barcombe Reservoir, 23 April 2019**



**Canada Goose, near Barcombe Reservoir, 23 April 2019**



**Barnacle Goose (feral flock), Barcombe Reservoir, 18 November 2019**



**Brent Goose (with Teal to left), Barcombe Reservoir, 15 February 2016**



**Mandarin (adult female on right and two juveniles), Knowlands Farm, 5 July 2020**



**Gadwall (male), Barcombe Reservoir, 29 April 2019**



**Teal (male), Knowlands Farm, 17 November 2018**



**Mallard (female & duckling), Barcombe, 3 May 2018**



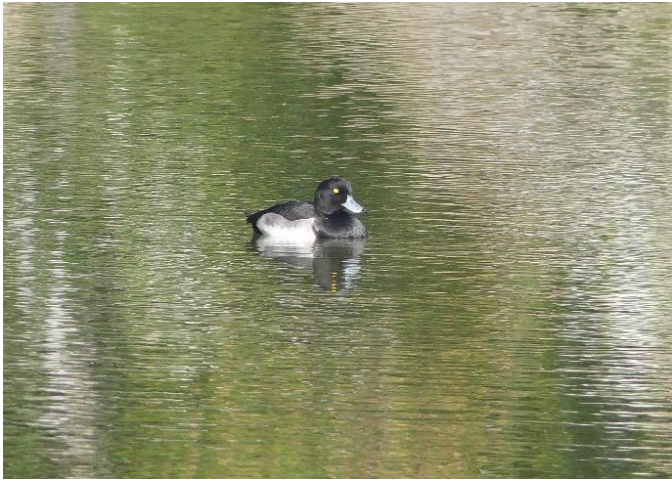
**Shoveler (three males, one female), Barcombe Reservoir, 16 April 2018**



**Red-crested Pochard (three males with Canada Geese in background), Barcombe Reservoir, 18 November 2019**



**Pochard (two males, three females), Barcombe Reservoir, 13 March 2017**



**Tufted Duck (male), Knowlands Farm, 2 November 2017**



**Goldeneye (female / immature), Barcombe Reservoir, 15 February 2016**



**Goosander (male), Barcombe Reservoir, 14 November 2016**



**Red Kite (juvenile), near Spithurst, 20 July 2019**



**Buzzard, old railway track, 12 May 2020**



**Kestrel (adult male), Knowlands Farm, 18 July 2020**



**Sparrowhawk (adult male) Barcombe, 17 April 2020**



**Red-footed Falcon (female), Barcombe Mills, 3 June 2015**



**Hobby (adult), old railway track, 8 September 2020**



**Peregrine (adult), Barcombe, 27 March 2020**



**Red-legged Partridge, near Boast Lane, 13 May 2020**



**Pheasant (two males fighting), Knowlands Farm, 17 April 2020**



**Moorhen, Knowlands Farm, 15 April 2017**



**Coot, Barcombe Reservoir, 20 May 2019**



**Lapwing (juvenile), Barcombe Reservoir, 18 June 2018**



**Snipe, Knowlands Farm, 8 April 2018**



**Woodcock, Knowlands Wood, 20 January 2020**



**Redshank, Barcombe Reservoir, 25 March 2019**



**Green Sandpiper, Barcombe Reservoir, 16 April 2018**



**Wood Sandpiper, Barcombe Reservoir, 5 August 2019**



**Common Sandpiper, Barcombe Reservoir, 24 August 2020**



**Mediterranean Gull (adult), Barcombe, 31 March 2020**



**Black-headed Gull (adults), near Anchor, 24 December 2015**



**Common Gull (adult), Barcombe, 26 December 2016**



**Lesser Black-backed Gull (adult with Herring Gull to left), Knowlands Farm, 28 August 2018**



**Herring Gull (adult pair), Barcombe, 1 March 2017**



**Common Tern, Knowlands Farm, 21 July 2018**



**Stock Dove, Knowlands Farm, 20 January 2020**



**Woodpigeon (bathing), Barcombe, 27 May 2016**





**Collared Dove, Barcombe, 27 January 2017**



**Cuckoo, Knowlands Farm, 13 May 2020**



**Little Owl, Barcombe Reservoir, 13 February 2017**



**Tawny Owl, Knowlands Wood, 3 April 2016**



**Swift, Barcombe, 4 May 2020**



**Green Woodpecker (female), Barcombe, 4 May 2017**



**Kingfisher (probably a juvenile female), Knowlands Farm, 28 August 2018**



**Great Spotted Woodpecker (juvenile), Barcombe, 11 June 2020**



**Lesser Spotted Woodpecker (female), Knowlands Farm, 2 December 2017**



**Sky Lark, Knowlands Farm, 13 May 2020**



**Sand Martin, Barcombe Reservoir, 11 September 2017**



**Swallow, Knowlands Farm, 21 May 2019**



**House Martin, Barcombe Reservoir, 11 September 2017**



**Meadow Pipit, Knowlands Farm, 25 March 2020**



**Rock Pipit, Barcombe Reservoir, 21 September 2020**



**Grey Wagtail, Barcombe, 31 October 2018**



**Pied Wagtail, Barcombe WTW, 18 January 2020**



**Wren, Barcombe, 6 April 2020**



**Dunnock, Barcombe, 9 April 2020**



**Robin, Barcombe, 29 March 2016**



**Nightingale, old railway track, 16 April 2017**



**Redstart (female), Knowlands Farm, 6 September 2018**



**Whinchat, Knowlands Farm, 6 September 2020**



**Stonechat, Knowlands Farm, 6 September 2020**



**Wheatear (female), Knowlands Farm, 16 April 2020**



**Song Thrush, Old Railway Track, 7 August 2020**



**Fieldfare, Barcombe, 28 February 2018**



**Blackbird (female), Barcombe, 28 January 2018**



**Redwing, Knowlands Wood, 27 February 2018**



**Mistle Thrush, Knowlands Farm, 30 January 2019**



**Lesser Whitethroat, old railway track, 1 May 2018**



**Common Whitethroat, Knowlands Farm, 12 July 2020**



**Garden Warbler, old railway track, 24 May 2020**



**Chiffchaff, old railway track, 13 April 2019**



**Blackcap (male), old railway track, 16 April 2017**



**Willow Warbler, Barcombe Reservoir, 14 August 2017**



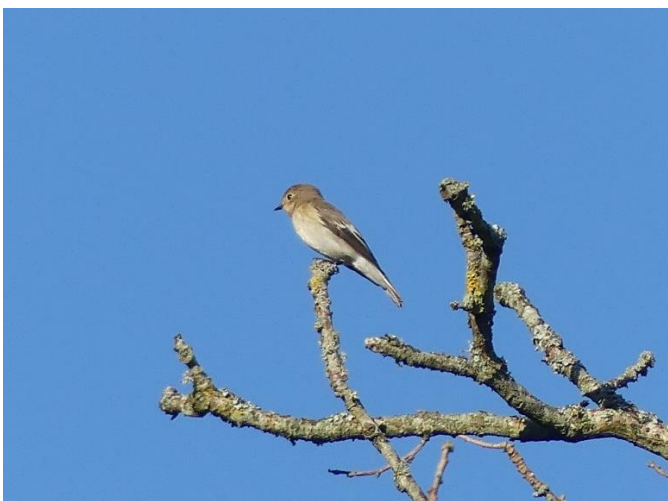
**Goldcrest, old railway track, 16 April 2017**



**Firecrest, Knowlands Wood, 18 January 2020**



**Spotted Flycatcher, Spithurst, 24 August 2019**



**Pied Flycatcher, Knowlands Farm, 16 August 20**



**Long-tailed Tit, old railway track, 7 April 2017**



**Coal Tit, New WTW, 29 April 2020**



**Blue Tit (juvenile), Barcombe, 9 June 2020**





**Great Tit (juvenile), Barcombe, 24 May 2020**



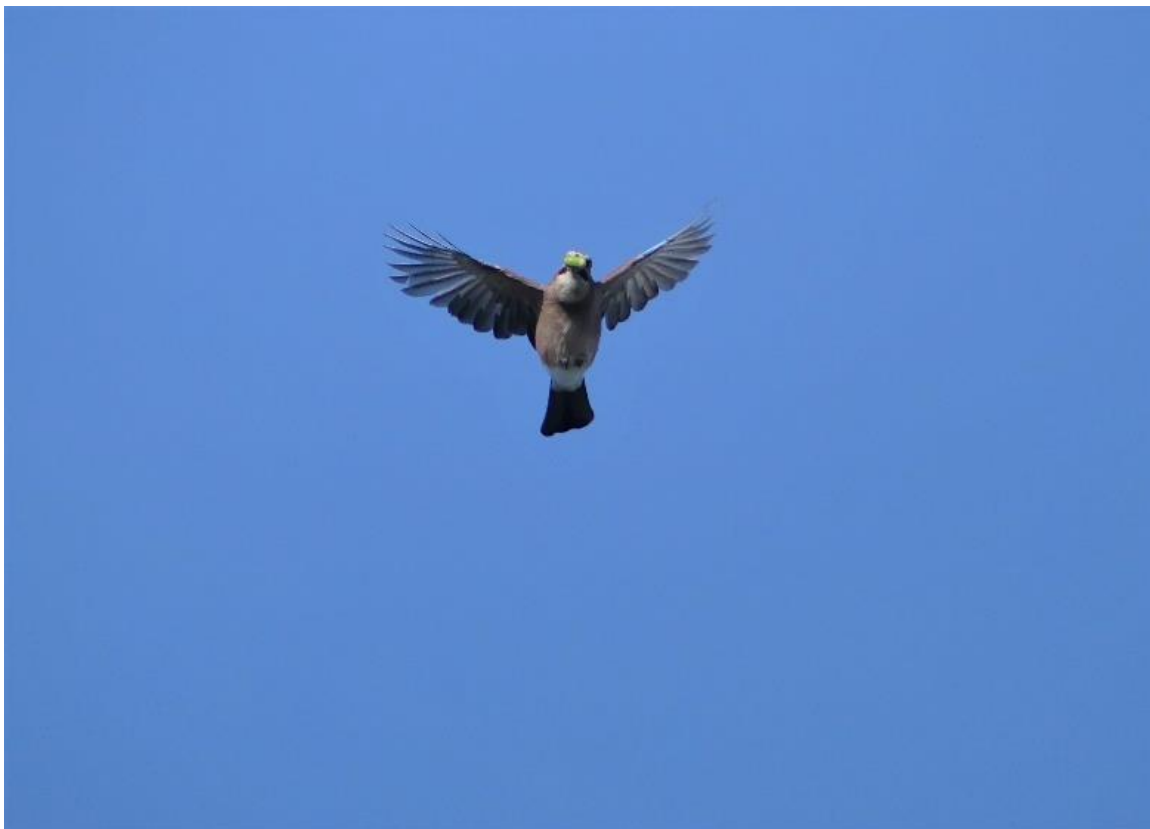
**Nuthatch, Barcombe, 4 October 2019**



**Tree Creeper, Knowlands Wood, 18 March 2018**



**Magpie, Barcombe, 10 June 2018**



**Jay (carrying green acorn), Barcombe, 15 September 2018**



**Jackdaw, Barcombe, 5 April 2020**



**Rook, Knowlands Farm, 23 February 2019**



**Carrion Crow, Knowlands Farm, 22 April 2019**



**Raven, Barcombe, 28 January 2019**



**Starling, Barcombe, 15 September 2019**



**House Sparrow (male), Knowlands Farm, 28 April 2019**



**Chaffinch (male), Anchor Lane, 22 April 2020**



**Greenfinch (male), Barcombe, 6 March 2020**



**Goldfinch (juveniles), Barcombe, 11 September 2020**



**Siskin, Isfield Weir, 25 March 2016**



**Linnet, Knowlands Farm, 11 August 2020**



**Redpoll, Knowlands Wood, 30 January 2019**



**Bullfinch (male) Barcombe, 27 January 2018**



**Hawfinch (female / immature), Knowlands Wood, 4 February 2018**



**Yellowhammer (male), Knowlands Farm, 16 August 2020**



**Reed Bunting (female / immature), Barcombe Reservoir, 7 September 2018**

***And finally – spot the bird!***

